

REGENERATED
MARBIE

STARMIANX



Catalogue

Product Description.....	03	Rusty Red.....	29
Dolomitic Travertine.....	04	Gold Sand.....	30
Linear Travertine.....	08	Cloud-Dragon.....	31
Ando Cement.....	11	3D Wood Concrete Board.....	32
Lime Stone.....	13	Taishan Stone.....	33
Stream Limestone.....	14	Case Appreciation.....	34
Dolomitic Marble Pillar.....	16	Construction Method.....	39
Ando Marble Pillar.....	17	Company Profile.....	44
Romanite.....	18	Product Structure.....	47
Skyline Stone.....	21		
Milan ite.....	24		
Zen Ando Cement Board.....	25		
Golden Faith.....	26		
Golden Sunse.....	27		
Italian Ash mountain stone ...	28		

Product Description

The Regenerated Marble series is an environmentally friendly new building material with high recyclability. Its appearance is various, including brick shape, stone shape, etc., with fine texture and natural color, which can meet the needs of different architectural designs.

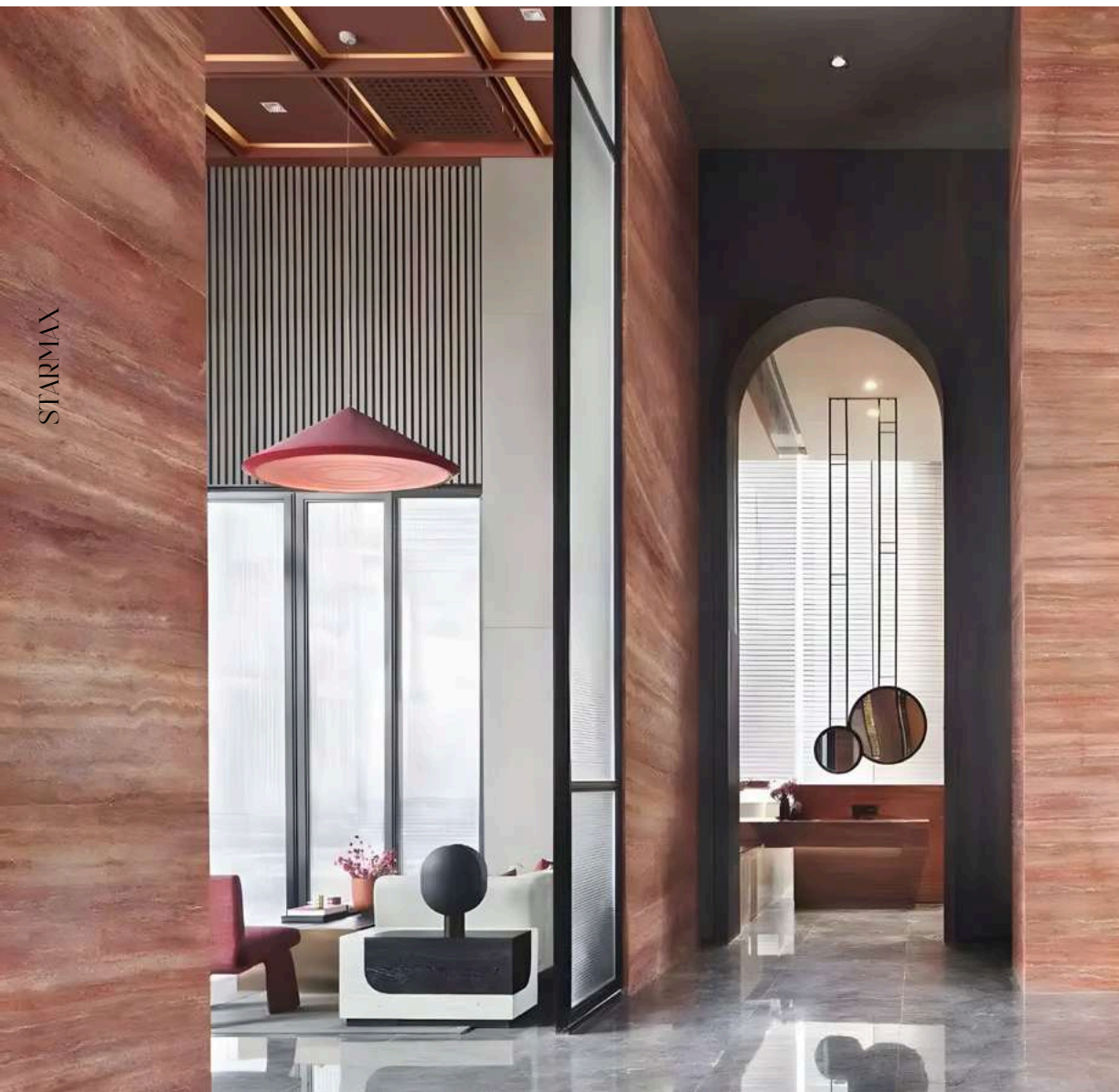
Regenerated marble has high physical and mechanical properties and good waterproof, anti-corrosion, and fire-resistant characteristics. It can be widely used in many fields, including walls, floors, and indoor and outdoor decoration. Using regenerated marble materials can save resources, reduce the generation of construction waste, and achieve sustainable development.

Dolomitic Travertine/SSTA32 Claybank

Size: 2400x1200 mm
Thickness: 3-5 mm

Size: 2400x600 mm
Thickness: 3-5 mm

Size: 1200x600 mm
Thickness: 3-5 mm



STARMAX



Soft Marble Series

Dolomitic Travertine/SSTA32

Dark Grey

Size: 2400x1200 mm

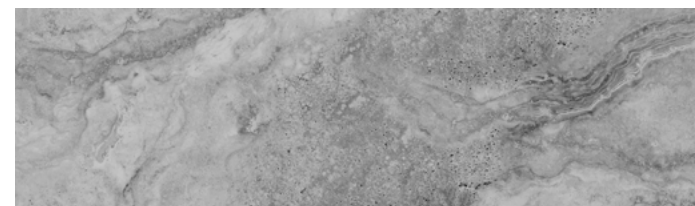
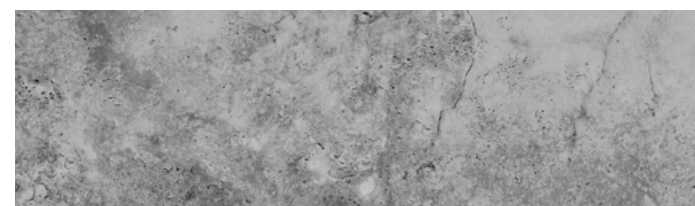
Thickness: 3-5 mm

Size: 2400x600 mm

Thickness: 3-5 mm

Size: 1200x600 mm

Thickness: 3-5 mm



Soft Marble Series

Dolomitic Travertine/SSTA32

Andean Red

Size: 2400x1200 mm

Thickness: 3-5 mm

Size: 2400x600 mm

Thickness: 3-5 mm

Size: 1200x600 mm

Thickness: 3-5 mm



Dolomitic Travertine/SSTA32

Andean White

Size: 2400x1200 mm

Thickness: 3-5 mm

Size: 2400x600 mm

Thickness: 3-5 mm

Size: 1200x600 mm

Thickness: 3-5 mm



Linear Travertine/SSTA33

Claybank

Size: 2400x1200 mm
Thickness: 3-5 mm

Size: 2400x600 mm
Thickness: 3-5 mm

Size: 1200x600 mm
Thickness: 3-5 mm



STARMAX



Soft Marble Series

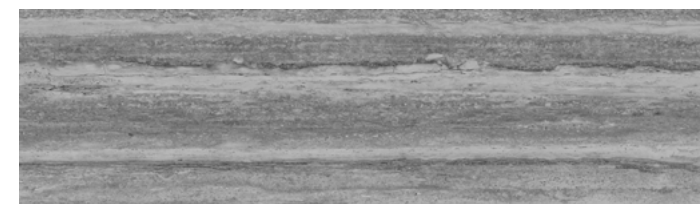
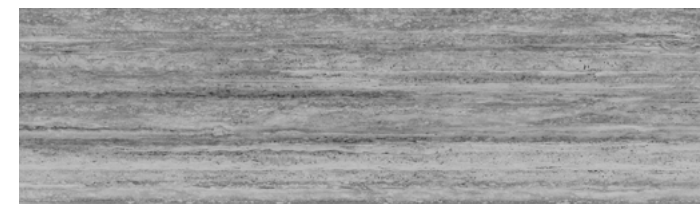
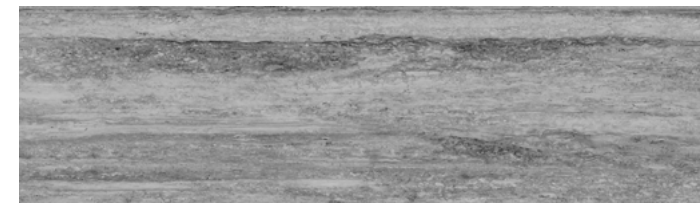
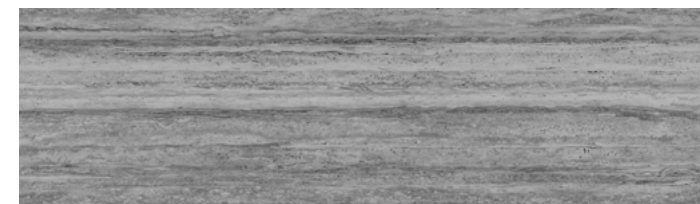
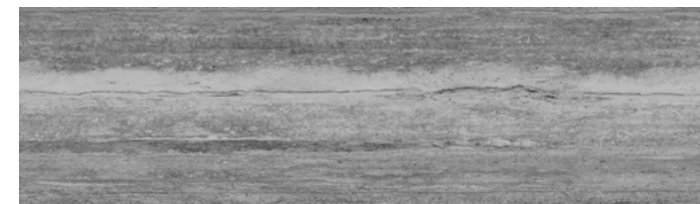
Linear Travertine/SSTA33

Light Grey

Size: 2400x1200 mm
Thickness: 3-5 mm

Size: 2400x600 mm
Thickness: 3-5 mm

Size: 1200x600 mm
Thickness: 3-5 mm



Soft Marble Series

Linear Travertine/SSTA33

Roman Yellow

Size: 2400x1200 mm

Thickness: 3-5 mm

Size: 2400x600 mm

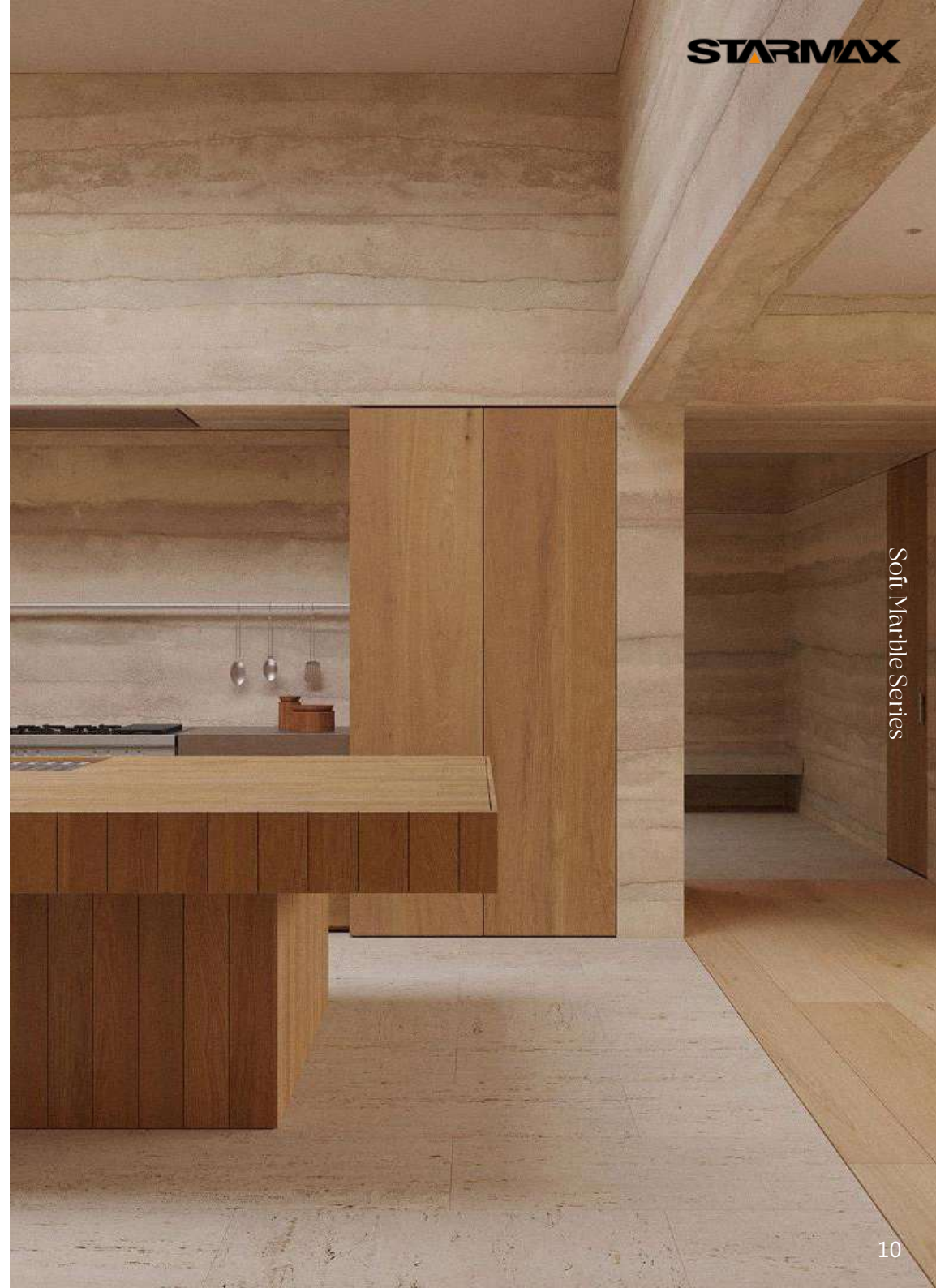
Thickness: 3-5 mm

Size: 1200x600 mm

Thickness: 3-5 mm



STARMAX



Soft Marble Series

Ando Cement/SSTA34

Taupe

Size: 2400x1200 mm

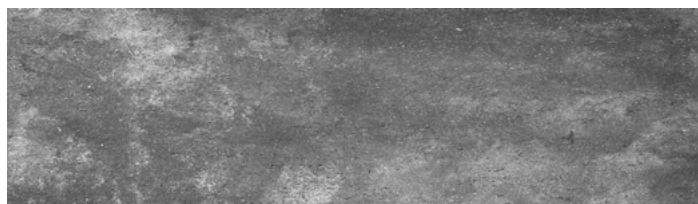
Thickness: 3-5 mm

Size: 2400x600 mm

Thickness: 3-5 mm

Size: 1200x600 mm

Thickness: 3-5 mm



STARMAX



Soft Marble Series

Ando Cement/SSTA34

Cement Grey

Size: 2400x1200 mm

Thickness: 3-5 mm

Size: 2400x600 mm

Thickness: 3-5 mm

Size: 1200x600 mm

Thickness: 3-5 mm



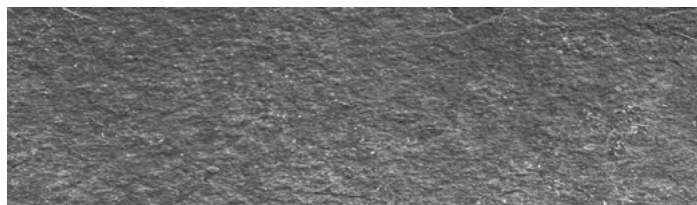
STARMAX



Soft Marble Series

Lime Stone/SSTA35

Size:1200x600 mm
Thickness: 3-5 mm



Dark Grey



Off-White

STARMAX



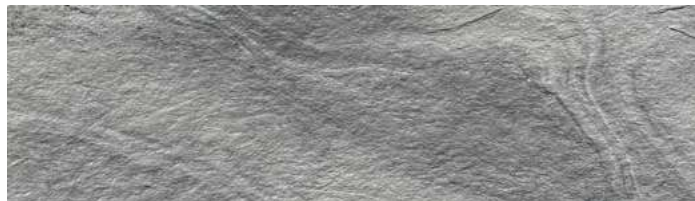
Soft Marble Series

Stream Limestone/SSTA36

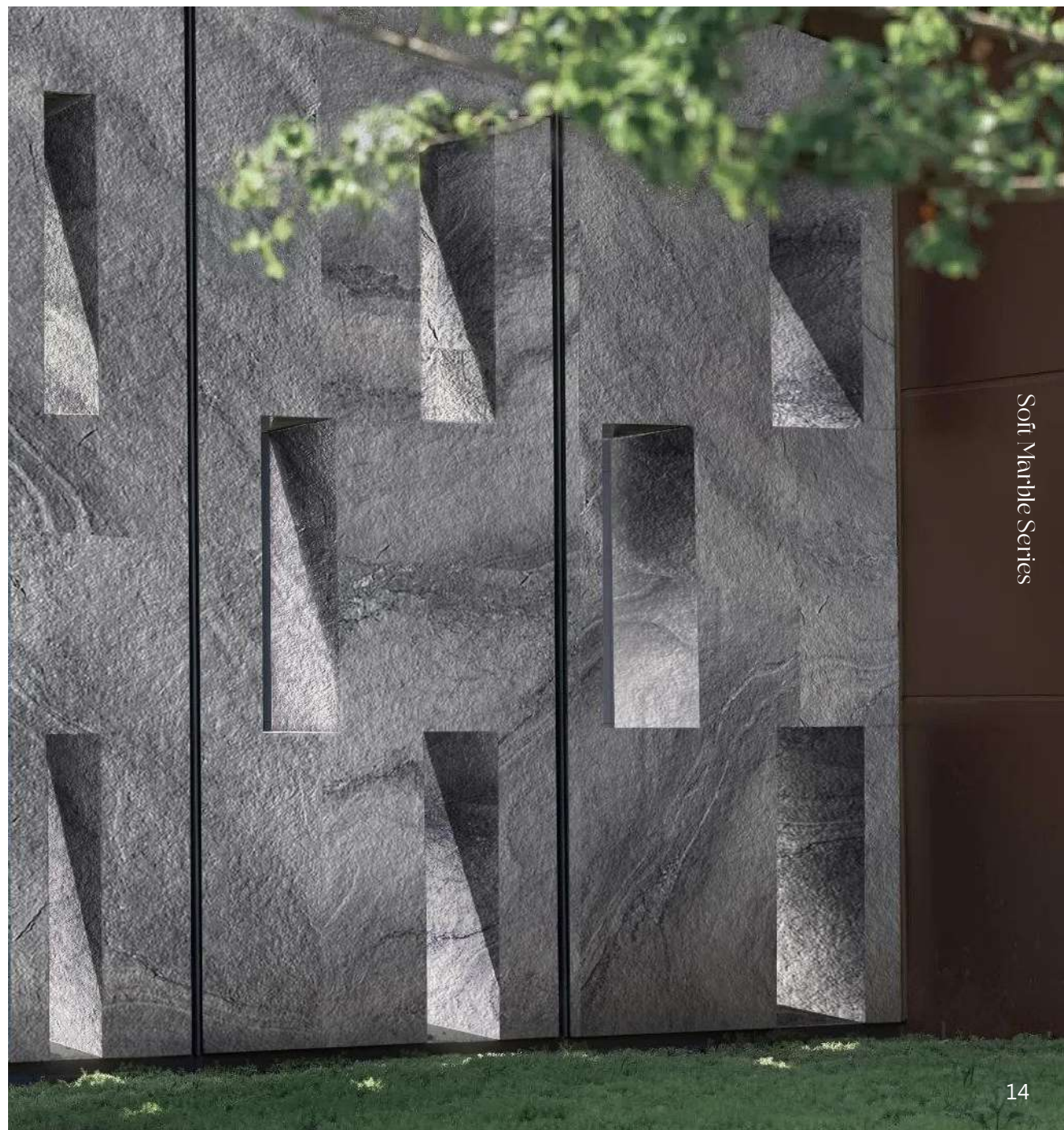
Dark Grey

Size: 1200x600 mm

Thickness: 3-5 mm



STARMAX



Soft Marble Series

Stream Limestone/SSTA36 Claybank

Size: 1200x600 mm
Thickness: 3-5 mm



STARMAX



Soft Marble Series

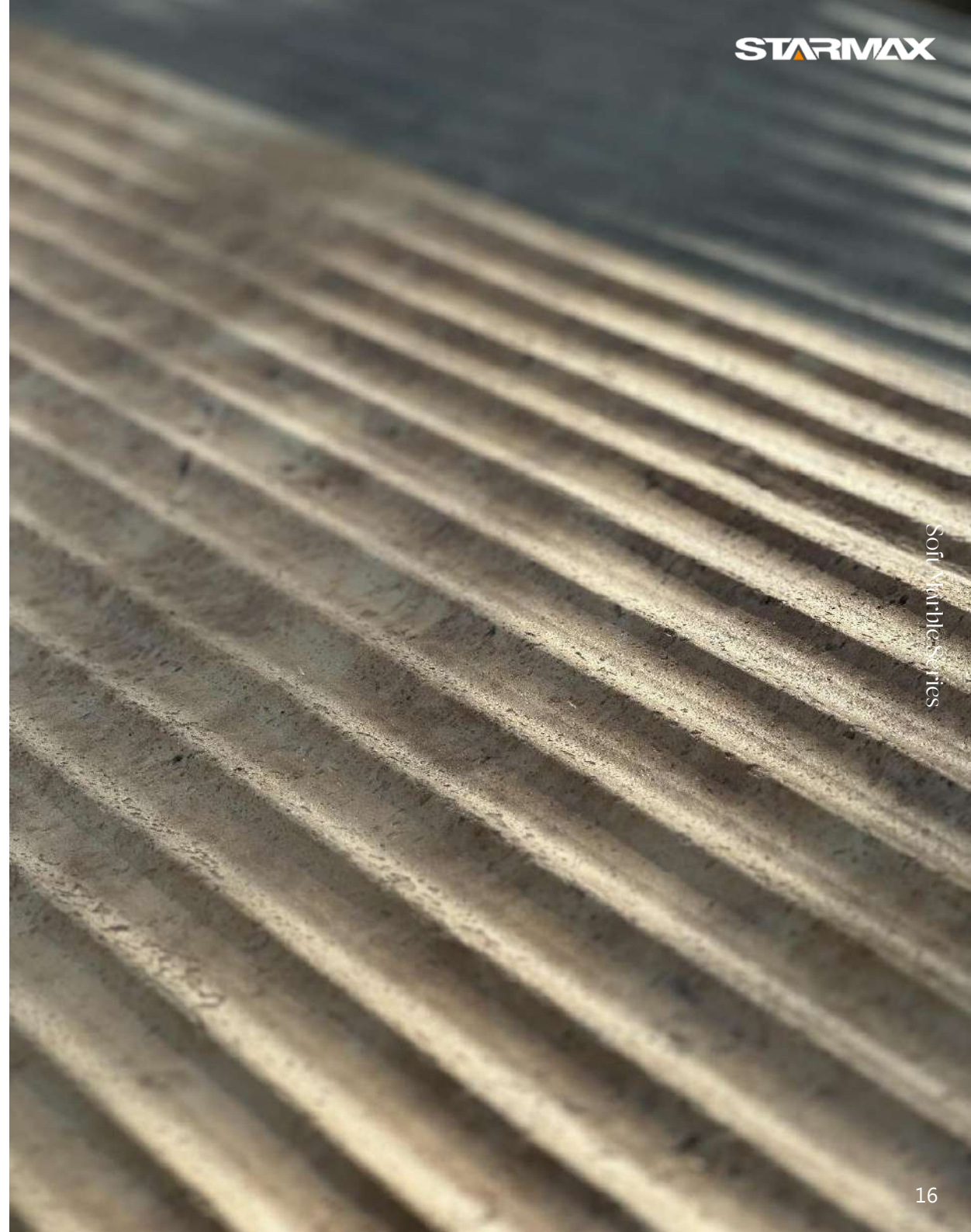
Dolomite Marble Pillar/SSTA37 Claybank

Size: 2780x600 mm

Thickness: 3-5 mm



STARMAX



Soft Marbles series

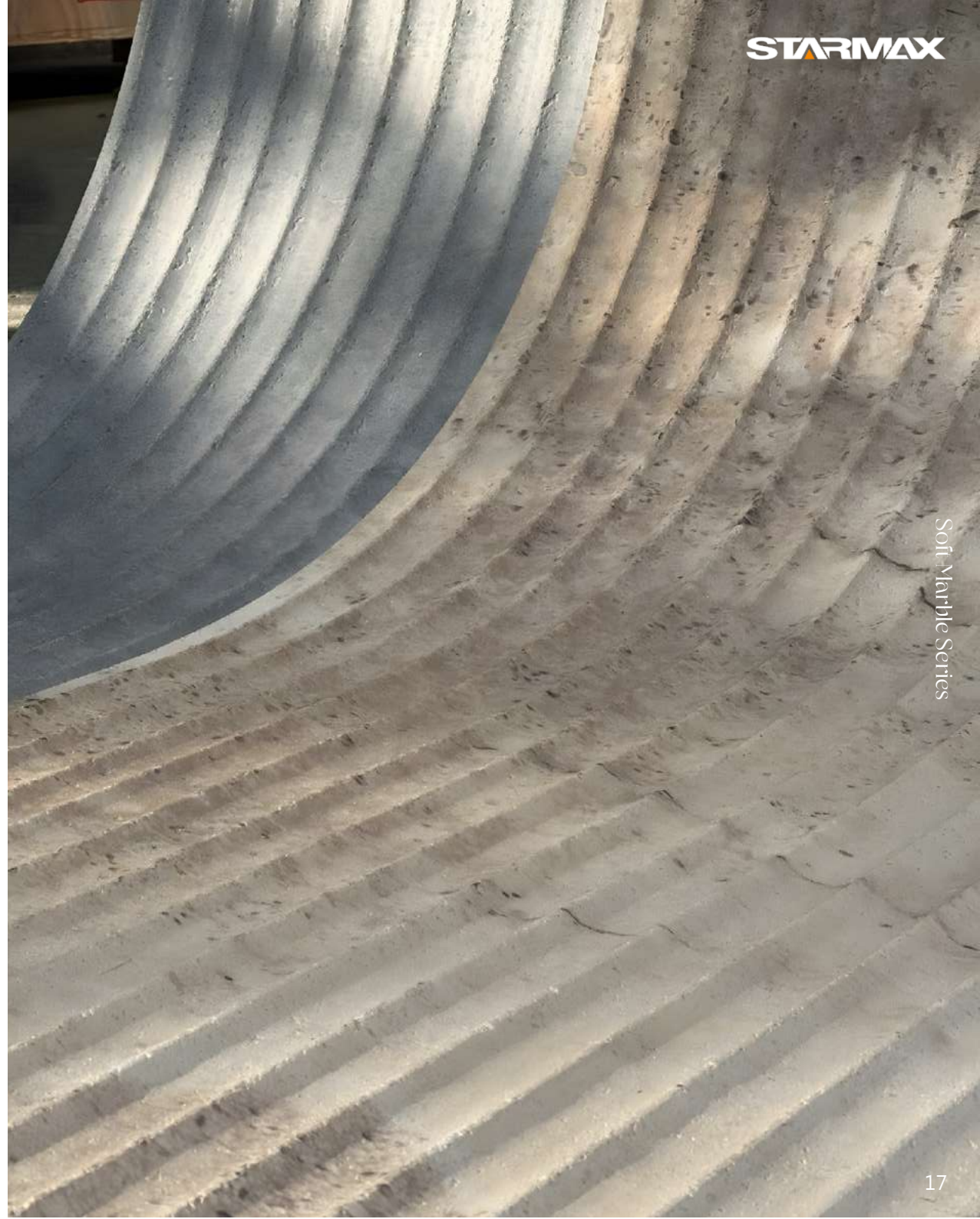
Ando Marble Pillar/SSTA38

Size: 2780x600 mm

Thickness: 3-5 mm



Cement Grey



Soft Marble Series

STARMAX

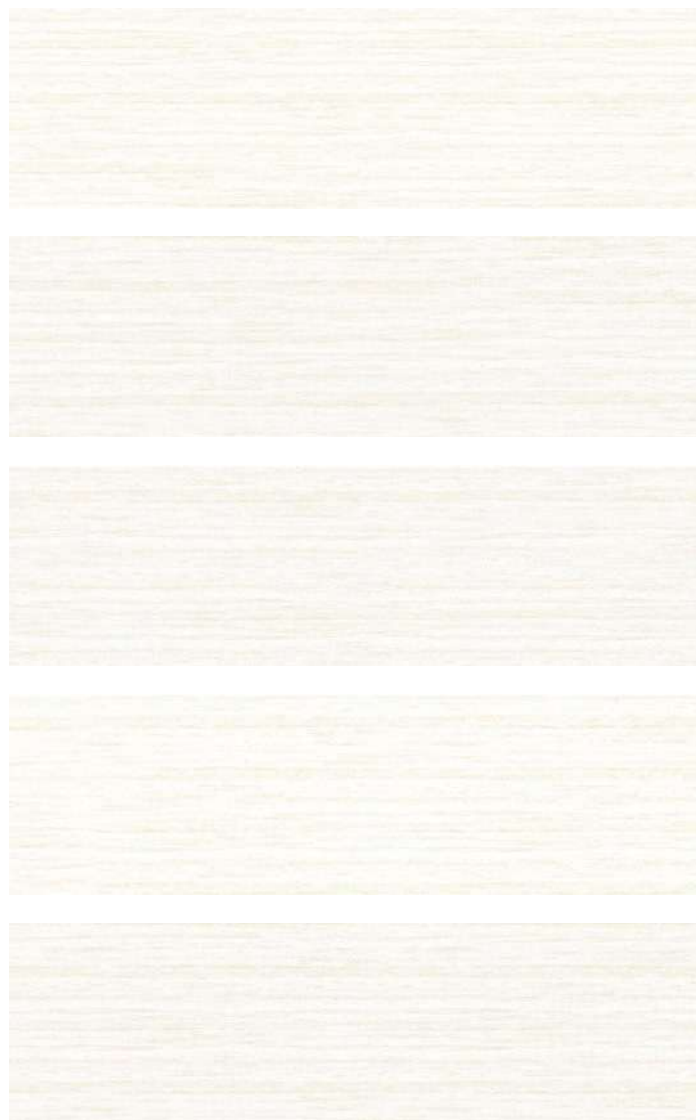
Romanite/SSTA39

Cloudy White

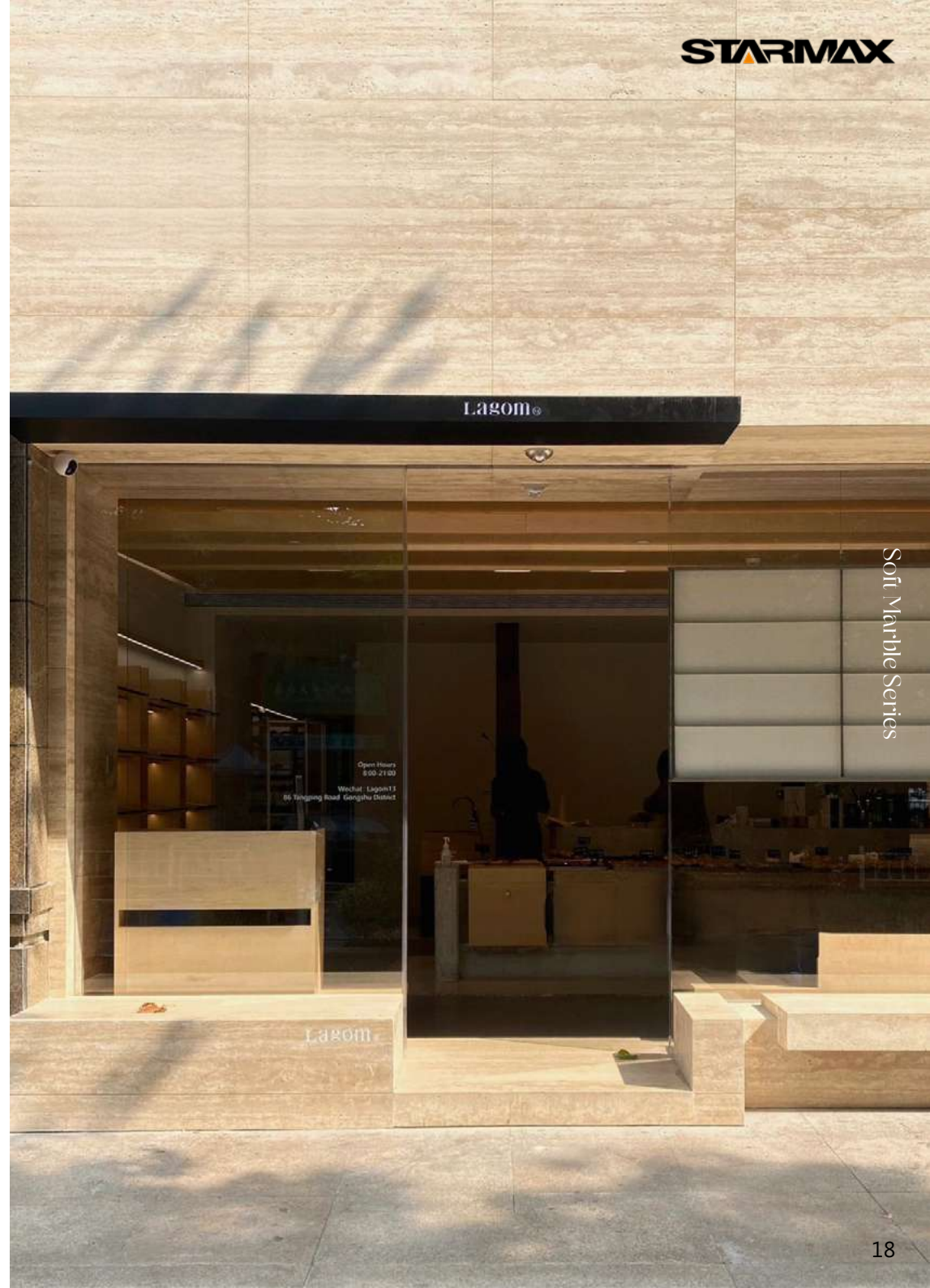
Size: 2400x1200 mm
Thickness: 3-5 mm

Size: 2400x600 mm
Thickness: 3-5 mm

Size: 1200x600 mm
Thickness: 3-5 mm



STARMAX



Soft Marble Series

Romanite/SSTA39

Cloudy Yellow

Size: 2400x1200 mm

Thickness: 3-5 mm

Size: 2400x600 mm

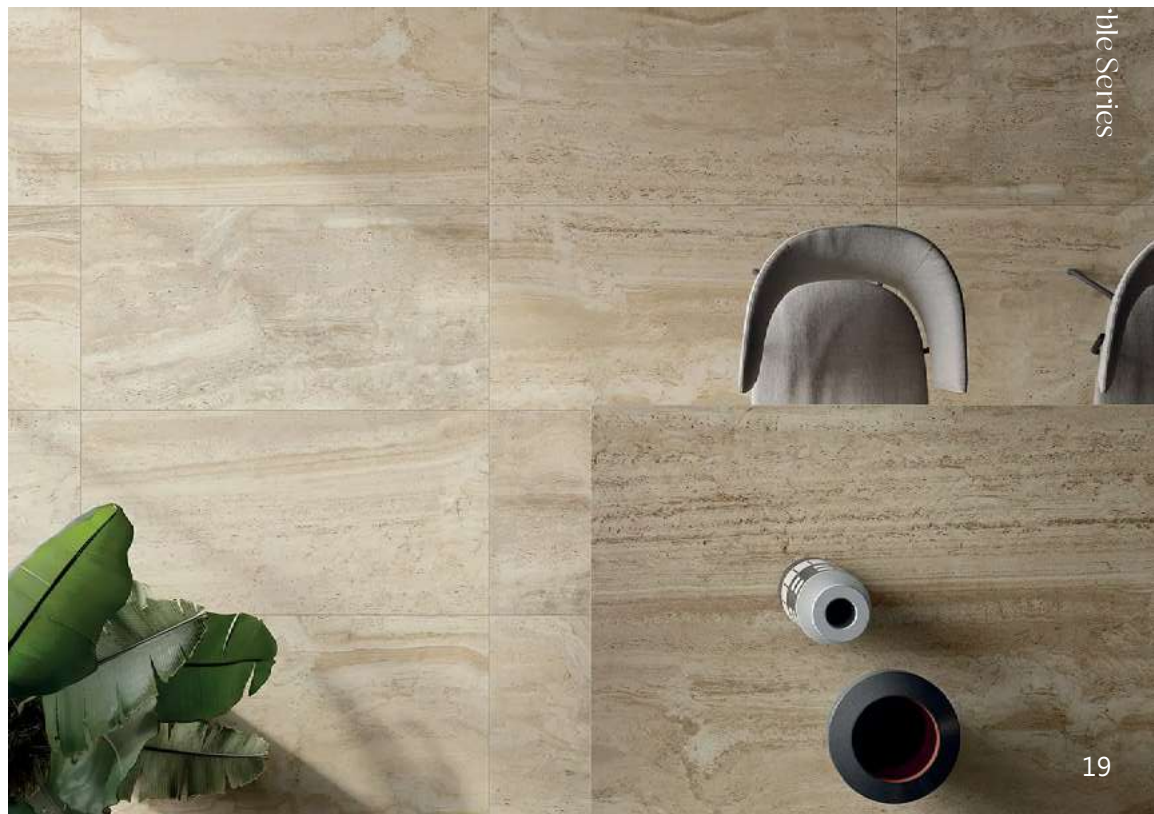
Thickness: 3-5 mm

Size: 1200x600 mm

Thickness: 3-5 mm



STARMAX



STARMAX

Soft
-ble Series

Romanite/SSTA39

Cloudy Grey

Size: 2400x1200 mm

Thickness: 3-5 mm

Size: 2400x600 mm

Thickness: 3-5 mm

Size: 1200x600 mm

Thickness: 3-5 mm

STARMAX



Soft Marble Series

Skyline Stone/SSTA40

Nile Grey

Size: 1200x600 mm

Thickness: 3-5 mm

STARMAX



Skyline Stone/SSTA40

Gritty Red

Size: 1200x600 mm

Thickness: 3-5 mm



Skyline Stone/SSTA40

Gritty Beige

Size: 1200x600 mm

Thickness: 3-5 mm



STARMAX



Soft Marble Series

Milan ite/SSTA50

Size: 2400x1200 mm
Thickness: 3-5 mm

Size: 2400x600 mm
Thickness: 3-5 mm

Size: 1200x600 mm
Thickness: 3-5 mm



White

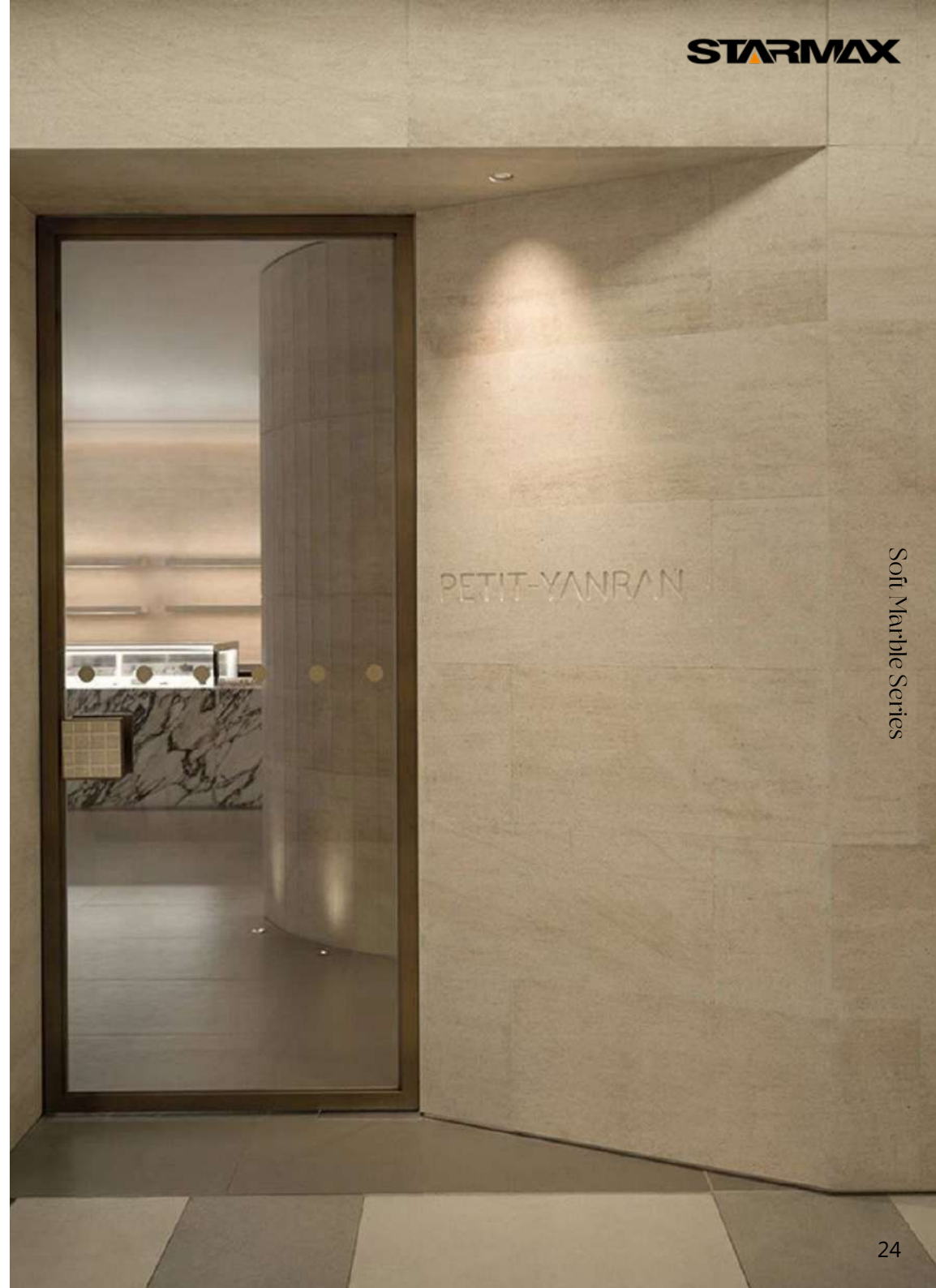


Yellow



Grey

STARMAX



Soft Marble Series

Zen Ando Cement Board/SSTA51

Size: 2400x1200 mm
Thickness: 3-5 mm

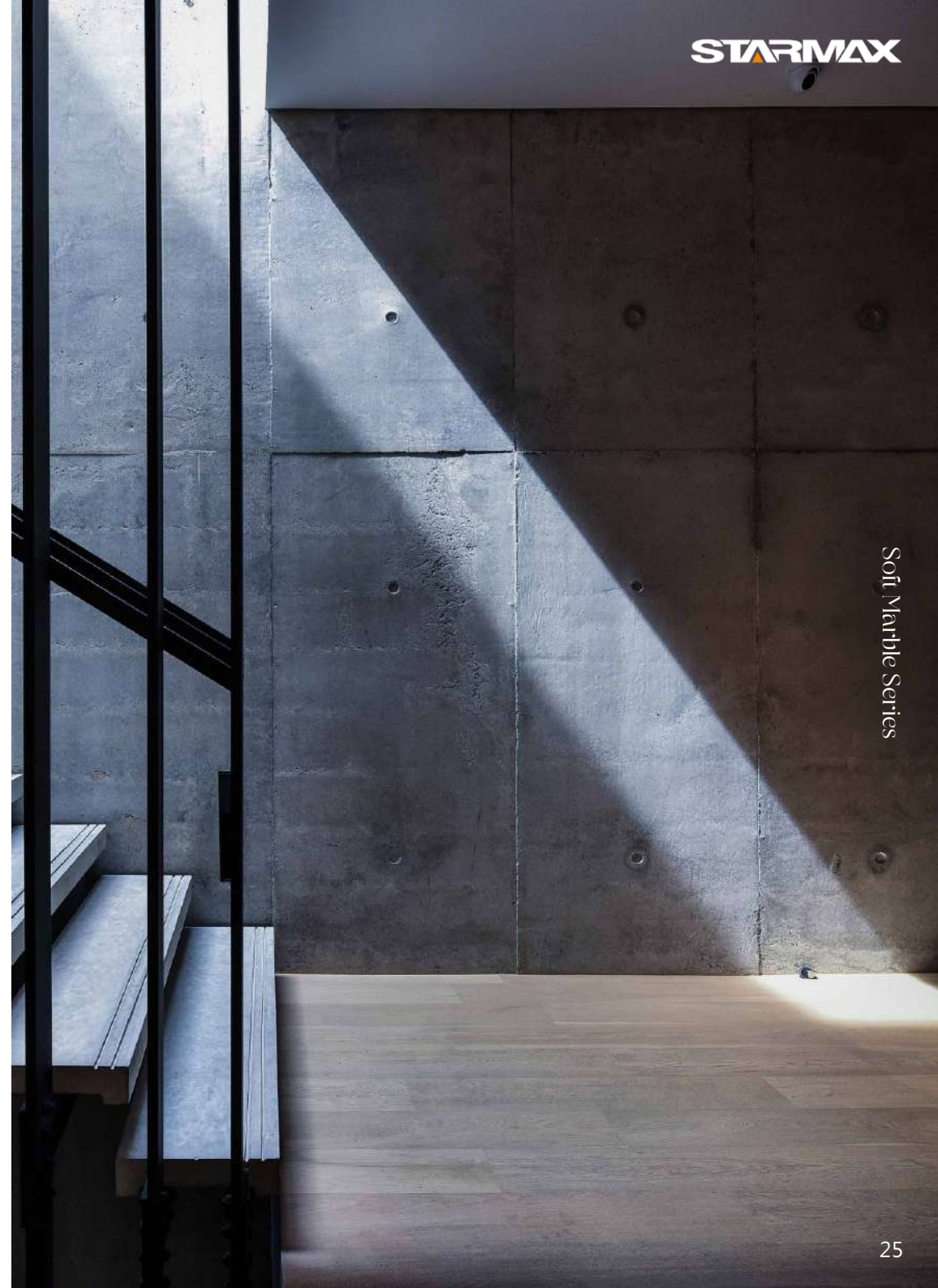
Size: 2400x600 mm
Thickness: 3-5 mm

Size: 1200x600 mm
Thickness: 3-5 mm



Warm gray

STARMAX



Soft Marble Series

Golden Faith/SSTA52

Sunset red

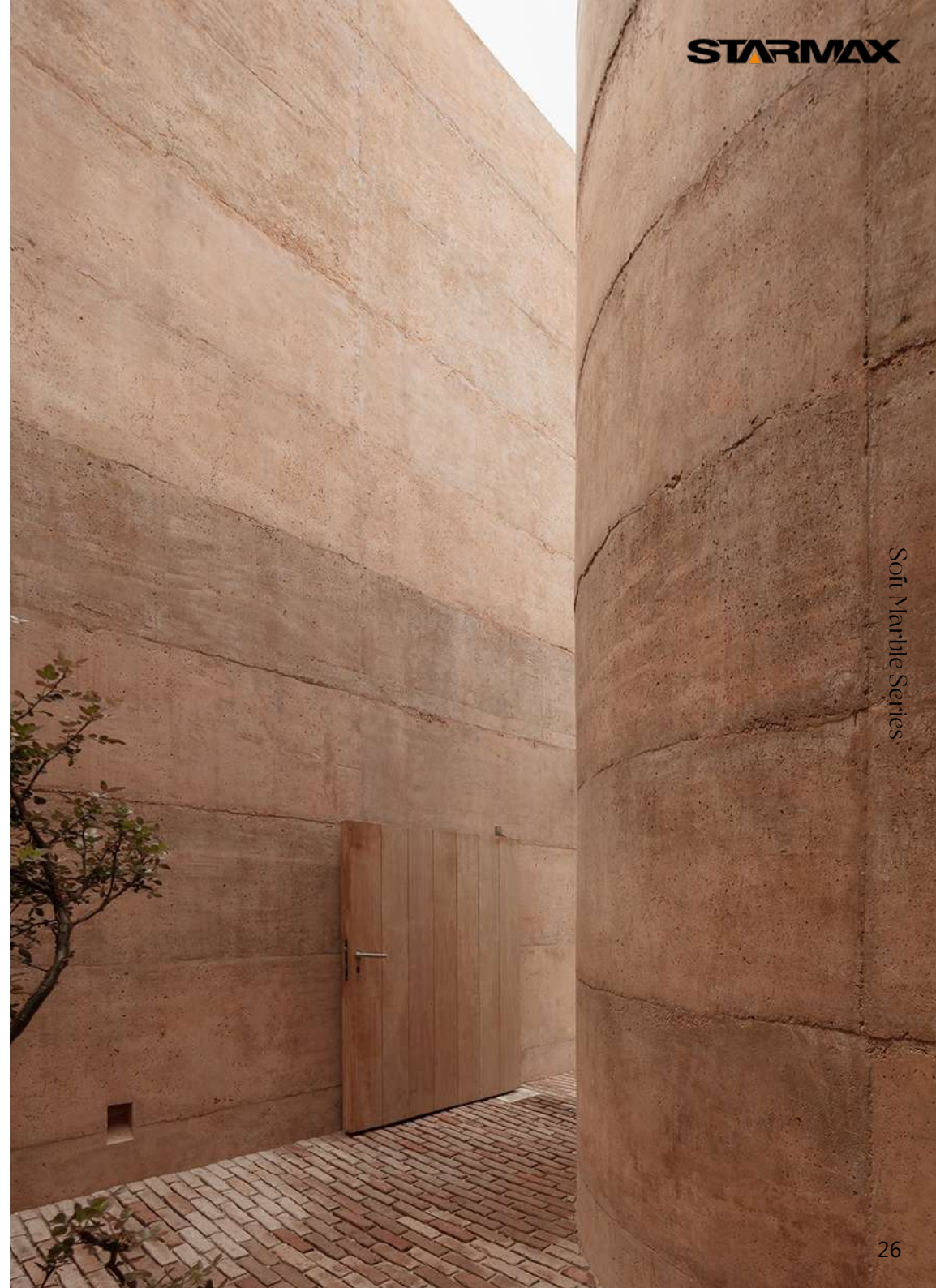
Size: 2400x1200 mm
Thickness: 3-5 mm

Size: 2400x600 mm
Thickness: 3-5 mm

Size: 1200x600 mm
Thickness: 3-5 mm



STARMAX



Soft Marble Series

Golden Sunset/SSTA53

Size: 1200x600 mm

Thickness: 3-5 mm



Golden



Dark claybank



Sliver grey



Dark grey

STARMAX



Soft Marble Series

Italian Ash mountain stone/SSTA54

Caslan Normandy Grey

Size: 1200x600 mm

Thickness: 3-5 mm



STARMAX



Soft Marble Series

Rusty Red/SSTA55

Size: 1200x600 mm

Thickness: 3-5 mm



Red

STARMAX



Soft Marble Series

Gold Sand/SSTA56

Size: 1200x600 mm

Thickness: 3-5 mm



STARMAX



Soft Marble Series

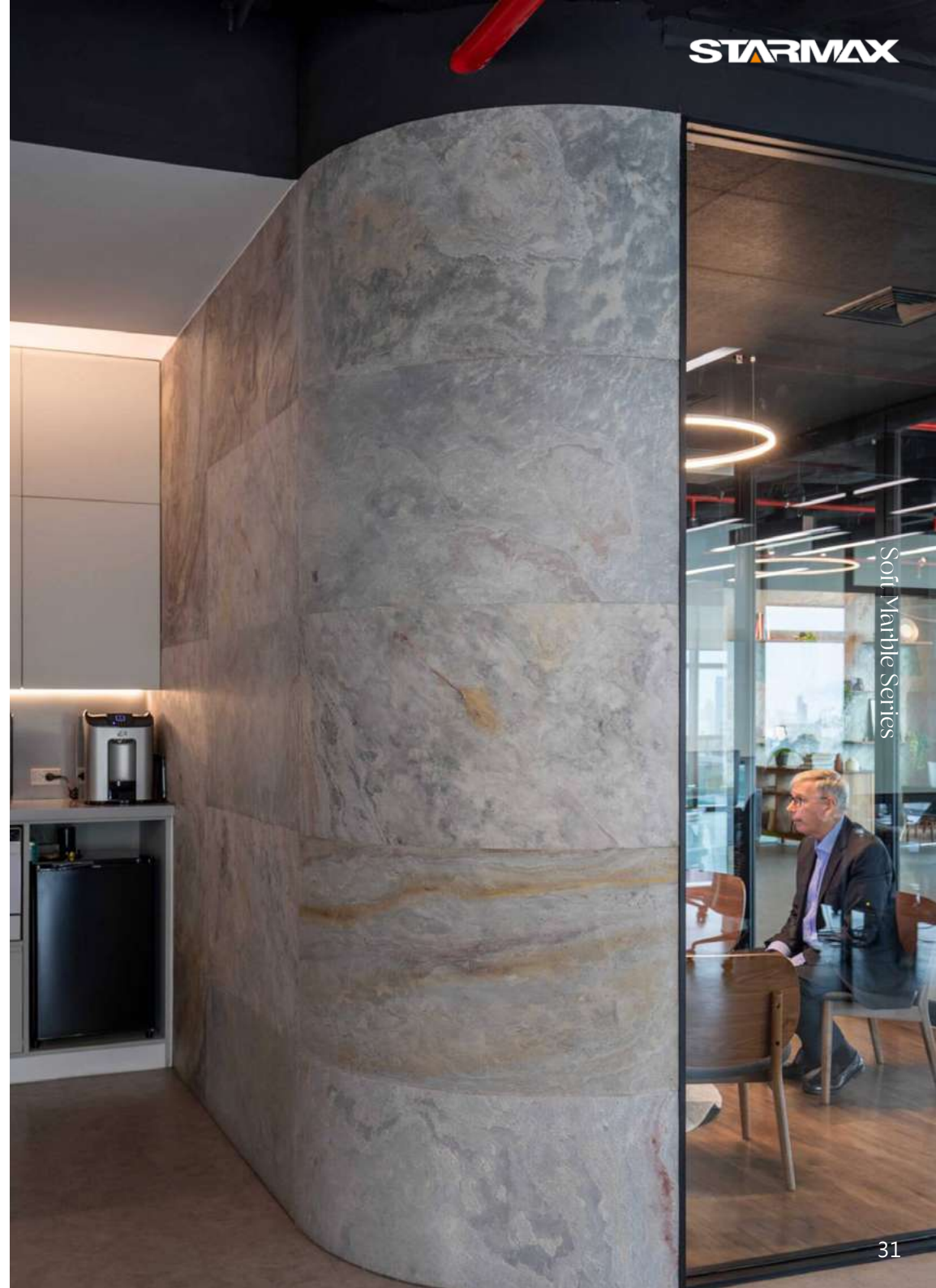
Cloud-Dragon/SSTA57

Size: 1200x600 mm

Thickness: 3-5 mm



STARMAX



Soft Marble Series

3D Wood Concrete Board /SSTA58

Size: 2950x1130 mm

Thickness: 3-5 mm

Size: 2950x565 mm

Thickness: 3-5 mm



Light grey



Taishan Stone/SSTA59

Size: 3060x1180 mm

Thickness: 3-5 mm



Claybank

STARMAX



Soft Marble Series

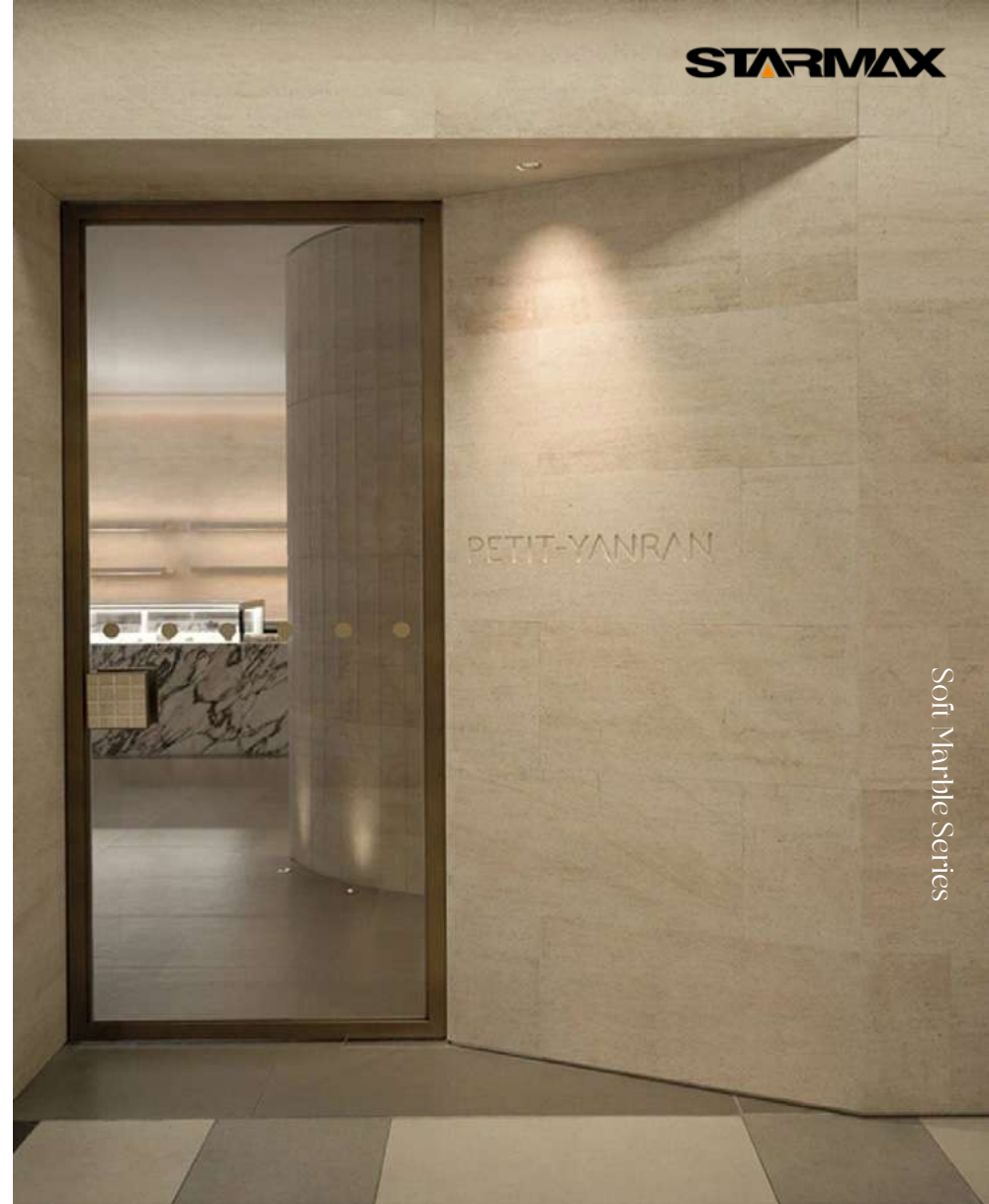
CASE
APPRECIATION

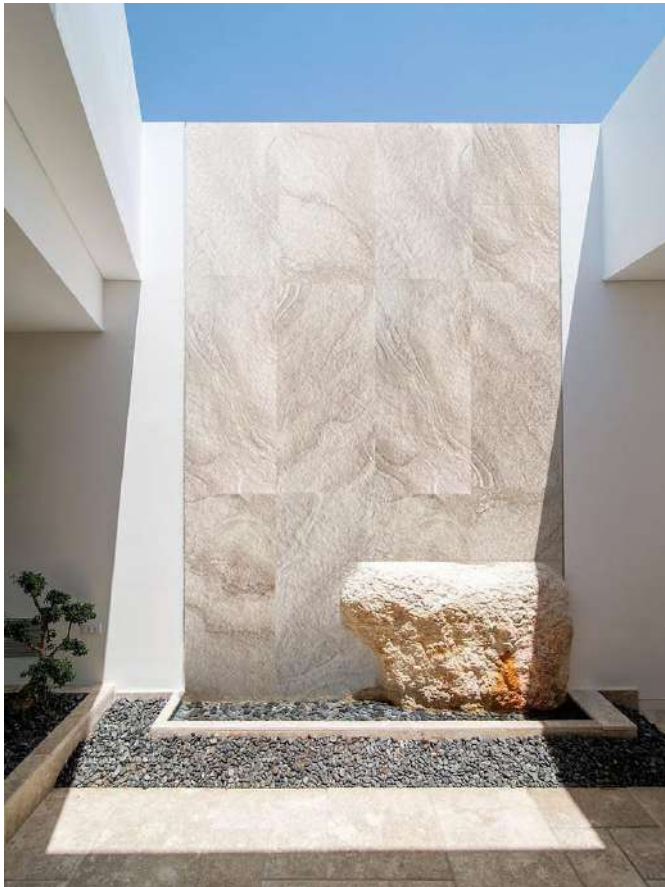
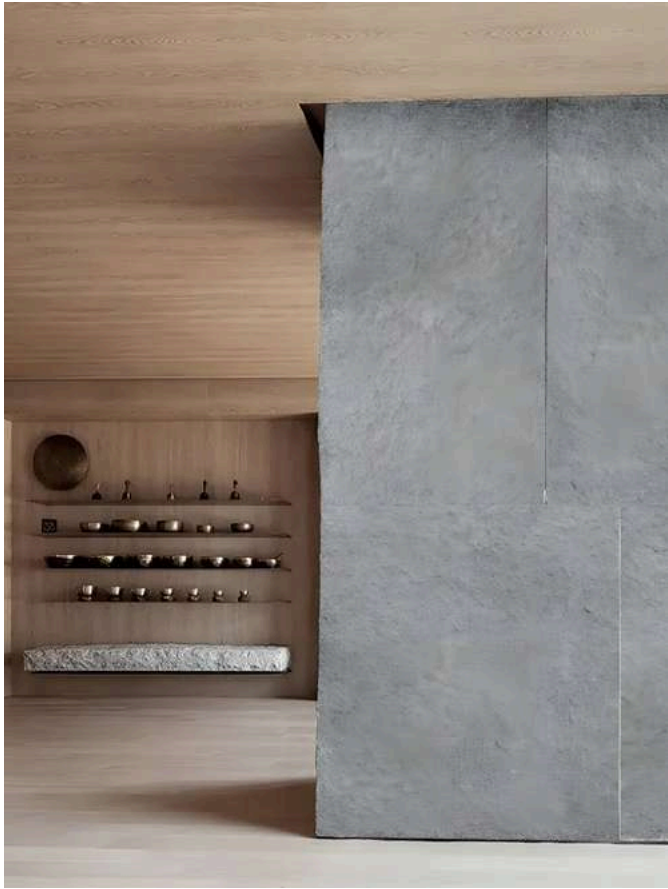
STARMAX





Soft Marble Series





CONSTRUCTION METHOD



1. Product Features

The surface has concave and convex grain or sand surface of flexible stone series, such as: pottery plate, SLATE, cave stone, sandstone, clear water rock, wood grain rock, art rock and other products, in the construction to pay special attention to clean, can not let the surface is binder, cement, paint and other materials pollution, otherwise it will not be good clean. The construction workers' hands should be kept clean, because the floor decoration paste soft stone product surface is half vitrified, within 24 hours after paste to prevent rain, so as not to be polluted.

2. Selection Of Binder And Caulk

2.1 Binder: Special binder should be chosen for better effect.

2.2 Sealant: Special matching sealant should be selected for better effect.

Note: In order to avoid the occurrence of alkalinity and whiteness, low alkaline or non-alkaline special binder and caulk should be used.

3. Construction Materials And Tools

(01) Leveling mortar;	(02) Sealing primer;	(03) Binder;	(04) Caulking agent;	(05) Enamel paint;	(06) Mortar barrel;
(07) Portable electric mixer;	(08) Gray knife;	(09) Ink;	(10) Saw trowel;	(11) Utility knife;	(12) Angle square;
(13) Caulking machine or special plastic bag for caulking;	(14) Joints steel bar;	(15) Gun nails;	(16) Brush;	(17) Special repair agent;	
(18) Hair roller;	(19) The board.				

4. Grass-Roots Treatment

4.1 Paste base application leveling mortar leveling must be smooth, no sand raised;

4.2 When the old face is renovated, there should be no empty drum, cracking, oil stains and peeling phenomenon.

4.3 After leveling and drying, the base layer shall be coated with a special sealing primer to prevent the cement base layer from seepage and pasting. (This is optional according to the site requirements).

4.4 Carry out lofting and elastic line according to the required size of product construction.

5. Leave Seam Paste And Close Seam Paste Requirements

5.1 Leave seam paste: leave seam mode and leave how wide, according to the design requirements, tiling leave seam 2-3mm; In the process of pasting, the pulp spilled into the seam must be scraped off in time, otherwise it will directly affect the effect of filling and marking.

5.2 Dense seam paste: the inner wall can be dense seam paste, but also unified 0.5-1 mm gap, which can more reflect the three-dimensional sense of brick.

6. Requirements For Caulking And Pulling

Caulk: All seams should be filled. The use of caulking machine caulking, can improve the speed of caulking and hooking, and can keep clean. Plastic bag caulk is not allowed to be used, and hole extrusion caulk can be used.

Drawing seam: The matching drawing bar should be used for drawing and marking, and the drawing seam should be deep concave, saturated and smooth.

7. Scraping Requirements

Use a trowel to paste and scrape on the back of the plate product. The paste thickness should be 1-2 mm, and the scraping surface should be even without sticking. The full paste degree of each plate should be above 80%, and a little space can be left on both sides of the hand grasp to avoid dirty hands.

8. Paste Action Requirements

Move the pressure and the line back and forth with both hands, and flatten with the paddle to evenly squeeze the pulp to the edge of the plate.

Note: Do not stick hard ceramic tile like press or knock, otherwise the board surface will appear concave and convex, affecting the aesthetic effect.

9. Externl Angle, Iternal Angle, Window Sill Paste Requirements

9.1 Externl Angle:

9.1.1 The crabapple edge can be left, and the butt Angle can be caulked, or the butt Angle can be touched at a 45 degree Angle. If there will be some holes in the butt Angle, the scrap material shall be crushed to block the solid and the special quick adhesive shall be dropped for bonding, but the sticky flow hanging of the adhesive must be avoided. After that, with sandpaper or grinder gently trim the Angle, so that the overall corner is 90 degrees square Angle, so that the construction is more rapid.

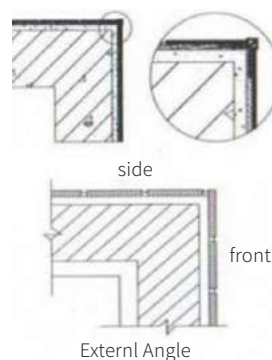


Butt joint primary color caulking

10R arc corner

Leave the begonia edge at the butt joint
smooth the seam with jointing agent

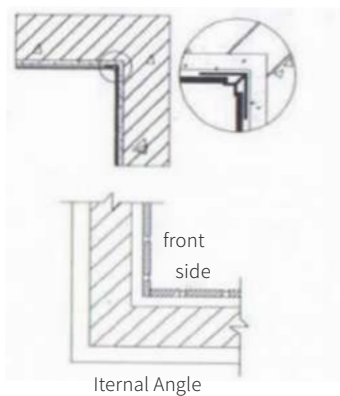
9.1.2 The horizontal and vertical Externl Angle part of the cocoa leaves begonia edge, butt Angle caulking, with flexible plate series products, can also be used to press the small side, front pressing the side method, its structure is shown in the figure above.



9.2 Internal Angle (The same construction steps as Externl Angle):

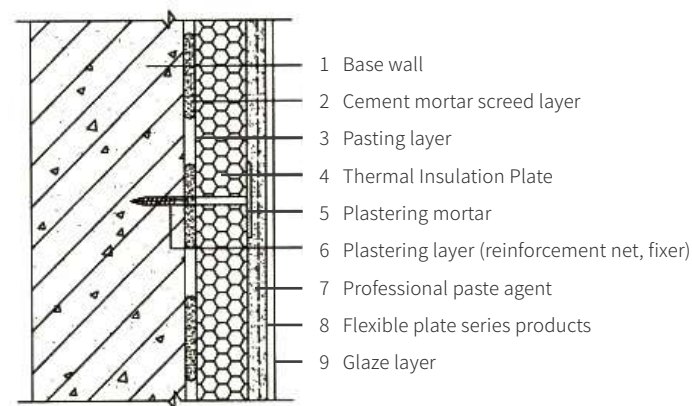
9.2.1 Right or left lap can be used, but the lap edge should be relatively flat.

9.2.2 The horizontal and vertical negative corners can also be left with crabapple edges, and the butt corners can be caulked with flexible plate series products. The large side can also be pressed on the small side, and the front side can be pressed on the side. The structure is shown in the figure above.



9.3 Curved Surface, Bevel Angle, Windowsill And Other Abnormity Parts

9.3.1 Curved surface, bevel Angle and other deformed parts can be directly compacted and wrapped with flexible sheets and tiles. Window, cornice, decorative line, awning, balcony and water mouth and other wall concave and convex parts should be waterproof and drainage structure. The drainage slope of the top surface at the horizontal Angle should not be less than 3%. The method of pressing facade flexible veneer brick with top surface flexible plate and face brick series products and pressing bottom plane flexible veneer brick with lowest row of facade flexible veneer brick should be adopted, and the dripping structure should be set. The structure is shown in the figure above.



10. Ceramic Tile Surface, Metal Surface, Wood Surface, Cement Inorganic Board Surface, Coating Surface Paste Requirements

10.1 Ceramic tile surface, metal surface, cement inorganic board and gypsum board surface: in sunny days, the cement based interface agent should be used for hair pulling treatment first, and 24 hours later, the two-component and slurry one-component binder should be used for trowel direct scraping on the back of the product, and then directly pasted.

10.2 Wood surface: the interior wall can be directly used with two-component, slurry type one-component adhesive, directly paste on the back of the product. Exterior wall or toilet should be waterproof treatment, and then directly paste on the back of the product.

10.3 Coating surface: coating surface is more complex, has been powder, peeling, empty drum base should be thoroughly eradicated after another base paste; If there is no powder, peeling or empty drum, it can be scratched and pasted on the back of the product with a trowel or pulling roller.

10.4 When the base is an external thermal insulation system, the external thermal insulation system of the external wall shall be accepted and qualified. Flexible sheet products can be directly pasted on the plaster layer. The schematic diagram of its construction is as above.

11. Cleaning Requirements

Due to the national construction adhesive, sealant industry standards, stone, ceramic tile adhesive, sealant must be mixed with a certain amount of polymer powder or water-based resin, so when the adhesive contaminates the surface, it is not good to clean. Special attention should be paid to the following:

11.1 When the slurry stains hands, do not use dirty hands to grasp (or touch) the surface of the product, so as not to increase the cleaning cost.

11.2 If there is slurry stain on the surface of the product, it should not be wiped wet. When it dries, it must be scraped off with a knife. Otherwise, it will get dirtier and dirtier.

11.3 After the paste, if there are any demands more better, take special fixing agent can use brush dips in top-down evenly repair surface, repair process followed by dry with a dry towel, can't let hang or non-uniform flow restoration agent, brush, brush process to frequently change new brush, lest the wall surface dirty ash deposition on the brush material is increasing, causing secondary pollution.

12. Surface Treatment

After ensuring that the surface of the product is clean, if the project needs, a special glaze paint should be uniform, and the construction method of spraying or rolling coating can be used. (This item is optional based on site requirements.)

13. Construction Flow Chart

Base leveling treatment

Sealing primer (optional)

Row brick, partition, elastic line

The adhesive on the back of the product is fully coated or scraped into a comb

Flexible stone products, straighten and flatten

Using special hooking agent caulking

Metope to clean up

Glazing paint (optional)



COMPANY PROFILE

Company Profile



Founded in 2004, STARMAX is a company dedicated to the procurement of new architectural materials. Its service targets include designers, architects, construction companies, design companies and other professionals and institutions related to the architectural design industry.

Our products cover various new building materials such as pouring panels, wall panels, components, coatings, etc., with tens of thousands of styles, which can meet the needs of different projects. In order to better serve customers, STARMAX has established long-term cooperative relationships with the world's top suppliers of new building materials. We firmly believe that high-quality and innovative materials can bring more possibilities and creativity to the architectural design industry, and at the same time improve the quality and value of projects.

How We Help Designers

Sifting through endless options online, creating dozens of new accounts, digging through supplier information, running a business while keeping track of the full content of purchased materials...have you ever felt like, it's a hassle more than once?

Every stage of the interior design process will be easier and more efficient when you have an efficient purchasing assistant!

STARMAX is a company dedicated to the procurement of new building materials, serving professional designers.

With our 18 years of sourcing experience and strong supplier background, you can draw inspiration from our vast library of building materials to turn any idea into reality.

We have over 135,000 products from over 1,700 suppliers worldwide.

Get in touch with us, and you will get free building material samples, exclusive material guides, annual building material trend collections and detailed price lists provided by STARMAX. You can choose directly from our wide range of new material options, or provide your ideas and models to our business staff.

- No project style restrictions;
- No need to create an account;
- No extra charge;
- After the order is completed, the shipping fee will be refunded in full;
- Screen multiple suppliers for comparison;
- Help procurement cost control.

In addition, we can also help you obtain first-class FF&E, OS&E procurement solutions. We can provide you with any level of design assistance you may require. We will be an extension of your team, supporting you with budgeting, product consulting, value engineering and procurement.

Whether you are an architect looking for innovative materials, a designer needing a special order, or a supplier of new products for your company, STARMAX can help you find what you need.

Our Team



The STARMAX project team is composed of experienced industry elites, including procurement team, business team and construction new material professionals, who always focus on business and partners' commercial success. Through efficient communication, we understand customer needs, customize innovative, competitive and cost-effective procurement solutions for customers, and supervise production and logistics in a timely manner to ensure that orders are delivered on schedule and projects do not miss the best time.



Our Mission And Vision

STARMAX is committed to providing innovative, environmentally friendly and high-quality new building materials for the architectural design industry, creating more possibilities for customers and creating a better future for society.



PRODUCT STRUCTURE

Product Supply Chain

After years of accumulation and hard work, STARMAX now has a large operation service team and rich experience, providing customers with a full range of integrated services from product development, production, OEM, procurement, agency, import, warehousing, logistics services to sales services .

Therefore, in addition to providing material procurement services, STARMAX also provides customers with one-stop services related to hotel business, including hotel renovation, hotel interior design, hotel product research and development, etc.

In the past 18 years, STARMAX has provided a complete set of renovation solutions for 1000+ hotel owners around the world, as well as related hotel products such as bedding, bathroom linen, tableware, furniture, and hotel personal product sets. Partners are located in more than 200 countries and regions around the world, including North America, Europe, Asia, Central America, the Middle East, Africa, etc.



Full-Line Supply Chain Of New Materials

Cement Series

- Cement Pouring Panel
- FRP Cement Pouring Panel
- Art Cement Pouring Panel
- Cement Decorated Slotted Panel
- Transparent Cement

Electroplated Tile Series

- Electroplated Marble
- Electroplated Ceramic Tiles
- Electroplated Mosaic

Mosaic Series

- Wood Mosaic
- Tile Mosaic
- Electroplated Mosaic
- Ultra Black Tiles

Paint Series

- Lime Paint
- Clay Paint
- Microcement Paint

Weaving Series

- Bamboo Weaving
- Rattan Weaving
- Pvc Weaving

Paper Series

- Dupont Paper
- Textured Paper

Creative Series

- Deep Mirror
- Star Ceiling Panel
- Immortal Moss

Panel Series

- Colorful Wooden Panel
- HPL Fireproof Panel
- Mirror Panel
- Gypsum Texture Panel
- PU Decorative Panel
- Foamed Ceramic Texture Panel
- Acrylic Panel
- Resin Glass
- Polyester Sound-Absorbing Panel
- Wood Silk Sound-Absorbing Panel

Metal Series

- Metal Panel
- Metal Ripple Panel
- Metal Mesh
- Aluminum Foam
- Metal Profiled Material

Art Brick

- 3D Cement Tiles
- Crystal Brick
- Hollow Crystal Brick
- Jade Glass

Wall Panel Series

- Mirror Wall Panel
- Metal Wall Panel
- Colorful Wall Panel
- Solid Wall Panel
- Hollow Wall Panel
- Microcement Wall Panel
- Wood-Plastic Grille

Soft Marble Series

- 3D Panel
- Project Panel
- Regenerated Marble
- Rammed Earth Panel

Component Series

- PU Component
- Foamed Ceramic Component

Marble Series

- Ultra-Thin Marble
- Volcanic Marble



STARMAX