

The background of the image shows a modern interior space. On the left, there is a bright blue wall. To the right, a dark wall with a fine, speckled texture is visible. The ceiling is a light, neutral color. The overall lighting is soft and modern.

CEMENT
SERIES

STARMAX

Catálogo

Transparent Cement	03
Case Appreciation	08
Art Cement Pouring Panel	15
Case Appreciation	54
Cement Pouring Panel	59
Case Appreciation.....	78
FRP Cement Pouring Panel	83
Case Appreciation	103
Cement Decorated Slotted Panel ...	108
Case Appreciation	118
Installation Guide	123
Company Profile	129
Product Structure	132



*TRANSPARENT
CEMENT*

Product Description

The transparent cement has a rich product line, which can be made into boards, bricks, and other customized products. According to different light transmittance, surface texture, texture, and arrangement of light-guiding materials, transparent cement can present different degrees of spreading or uniform light-transmitting effects. Designers can incorporate design patterns into the transparent cement or customize different sizes according to needs. Transparent cement can eliminate the cramped feeling of space and bring people better space enjoyment. When the light interacts with the transparent cement, the surrounding scenery, and plants are integrated, reflecting the most essential texture and aesthetics.





STCA01

Size: 600x1200x20 mm



Color: Black



Color: White



Color: Deep Grey



Color: Grey

STCA02

Size: 600x1200x20 mm



Color: Deep Grey



Color: Grey

Cement Series



STARMAX

STCA03

Size: 600x1200x20 mm



Color: Deep Grey



Color: Grey

Cement Series



STARMAX

CASE
APPRECIATION

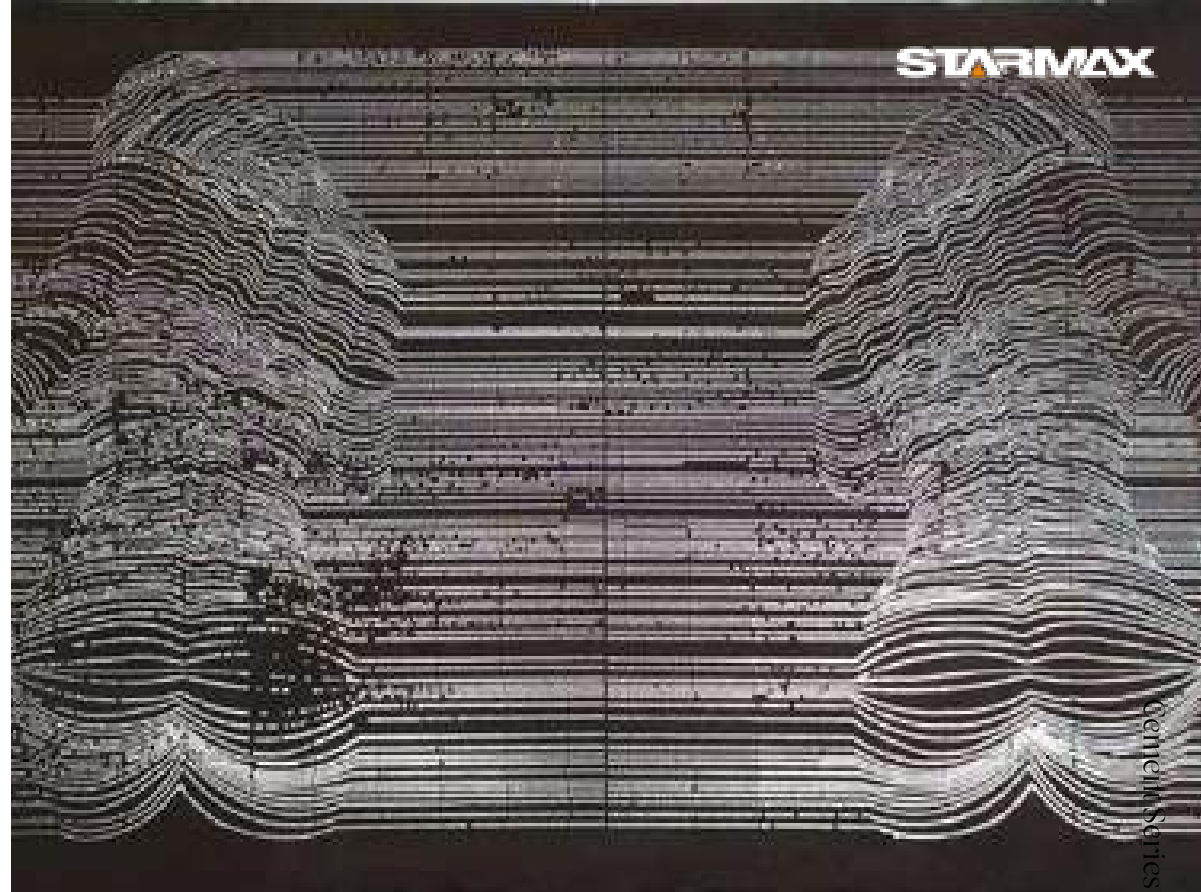
STARMAX

STARMAX

Content Series



STARMAX



STARMAX

Genem Series







STARMAX



STARMAX

Content Series





*ART CEMENT
POURING PANEL*

Product Description

Art cement pouring panel combines the advantages of cement and wood. It is as light as wood, has good sound and heat insulation performance, and is as solid and moisture-proof as cement. The texture of the art cement pouring panel can be changed according to the needs, and it can be widely used in interior and exterior walls, floors, ceilings, furniture, and sound insulation walls for decoration, creating a minimalist and natural decorative effect. Designers can freely cut, perforate and polish the art cement pouring panel, which is convenient for construction and dramatically improves construction efficiency.





SACP01
 Type: Soft / Hard
 Size: 1000x2800 mm
 Thickness: 10-12 mm



SACP02
 Type: Soft / Hard
 Size: 1000x2800 mm
 Thickness: 10-12 mm



SACP03
 Type: Soft / Hard
 Size: 1000x2800 mm
 Thickness: 10-12 mm



SACP04
 Type: Soft / Hard
 Size: 1000x2800 mm
 Thickness: 10-12 mm



SACP05
 Type: Soft / Hard
 Size: 1000x2800 mm
 Thickness: 8-10 mm



SACP06
 Type: Soft / Hard
 Size: 1000x2800 mm
 Thickness: 10-12 mm



SACP07
 Type: Soft / Hard
 Size: 1220x3000 mm
 Thickness: 4-6 mm



SACP08
 Type: Soft / Hard
 Size: 1000x2800 mm
 Thickness: 4-6 mm





STARMAX



STARMAX

Cement Series



SACP09
 Type: Soft / Hard
 Size: 1000x2800 mm
 Thickness: 4-6 mm



SACP10
 Type: Soft / Hard
 Size: 1220x3000 mm
 Thickness: 4-6 mm



SACP11
 Type: Soft / Hard
 Size: 1220x3000 mm
 Thickness: 4-6 mm



SACP12
 Type: Soft / Hard
 Size: 1220x3000 mm
 Thickness: 4-6 mm



SACP13
 Type: Soft / Hard
 Size: 1000x2800 mm
 Thickness: 8-10 mm



SACP14
 Type: Soft / Hard
 Size: 1000x2800 mm
 Thickness: 8-10 mm



SACP15
 Type: Hard
 Size: 1000x2800 mm
 Thickness: 10-12 mm



SACP16
 Type: Soft / Hard
 Size: 1000x2800 mm
 Thickness: 4-5 mm

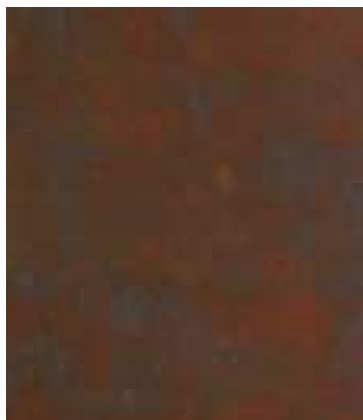


STARMAX



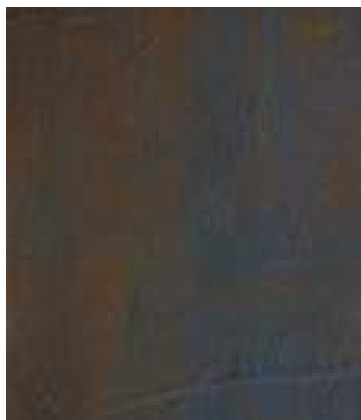
STARMAX

Concrete Series



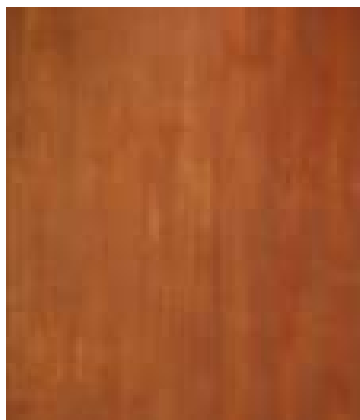
SACP17

Type: Soft
 Size: 1000x2800 mm
 Thickness: 3-5 mm



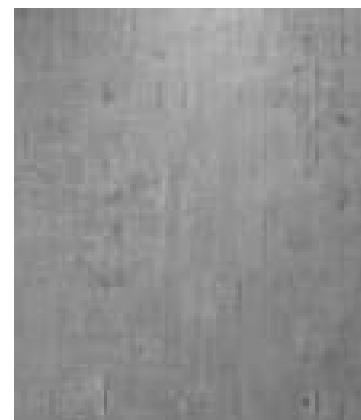
SACP18

Type: Soft
 Size: 1000x2800 mm
 Thickness: 3-5 mm



SACP19

Type: Soft
 Size: 1000x2800 mm
 Thickness: 3-5 mm



SACP20

Type: Hard
 Size: 1000x2800 mm
 Thickness: 4-8 mm



SACP21

Type: Hard
 Size: 1000x2800 mm
 Thickness: 8-12 mm



SACP22

Type: Hard
 Size: 1000x2800 mm
 Thickness: 8-12 mm



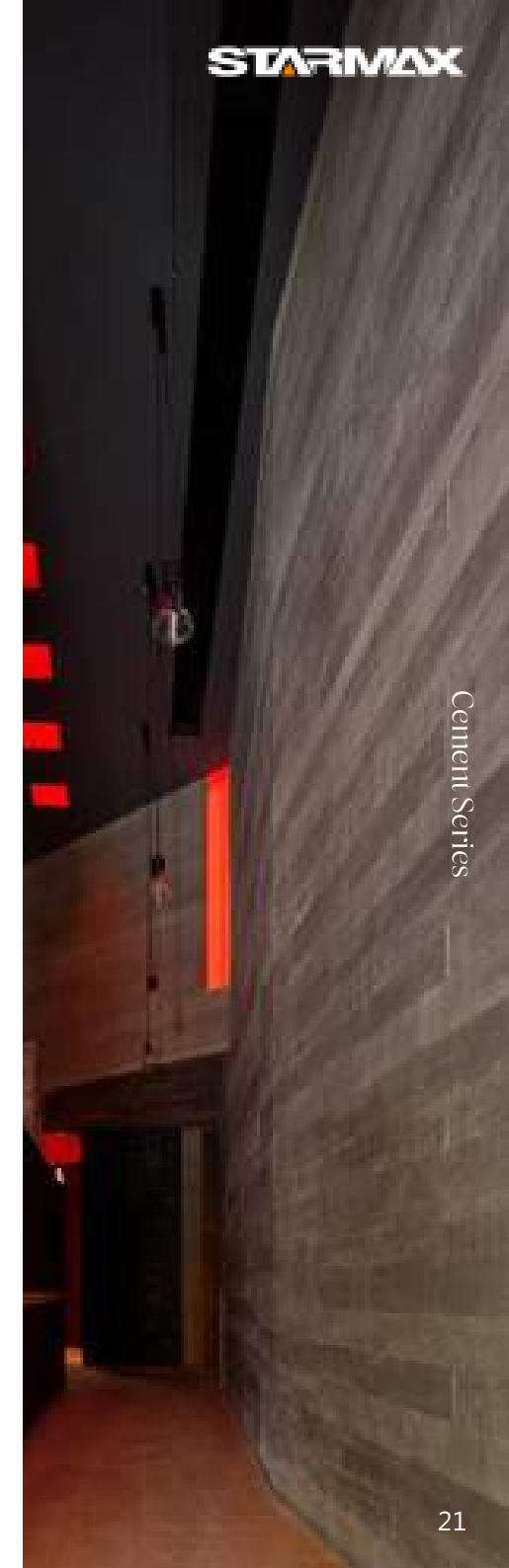
SACP23

Type: Hard
 Size: 1280x3250 mm
 Thickness: 8-10 mm



SACP24

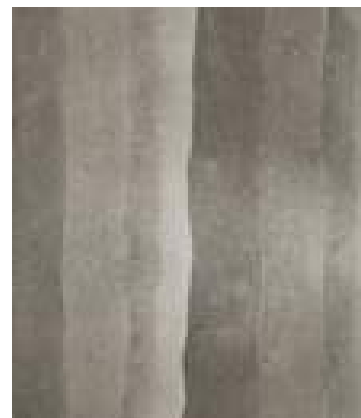
Type: Hard
 Size: 1200x3000 mm
 Thickness: 6-8 mm



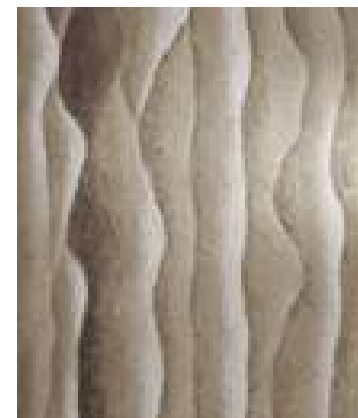




SACP25
 Type: Soft / Hard
 Size: 1220x3000 mm
 Thickness: 6-8 mm



SACP26
 Type: Soft / Hard
 Size: 1220x3000 mm
 Thickness: 6-8 mm



SACP27
 Type: Soft / Hard
 Size: 1220x3000 mm
 Thickness: 6-8 mm



SACP28
 Type: Soft / Hard
 Size: 1220x3000 mm
 Thickness: 6-8 mm



SACP29
 Type: Soft / Hard
 Size: 1260x3260 mm
 Thickness: 6-20 mm



SACP30
 Type: Soft
 Size: 1190x2880 mm
 Thickness: 3-6 mm



SACP31
 Type: Soft
 Size: 1190x2880 mm
 Thickness: 3-6 mm



SACP32
 Type: Soft / Hard
 Size: 1220x3000 mm
 Thickness: 6-8 mm



STARMAX

STARMAX



Concrete Series



SACP33

Type: Soft / Hard
 Size: 1220x3000 mm
 Thickness: 4-6 mm



SACP34

Type: Soft / Hard
 Size: 1220x3000 mm
 Thickness: 4-6 mm



SACP35

Type: Soft / Hard
 Size: 1240x3000 mm
 Thickness: 4-6 mm



SACP36

Type: Soft / Hard
 Size: 1240x3000 mm
 Thickness: 4-6 mm



SACP37

Type: Soft / Hard
 Size: 1220x3000 mm
 Thickness: 6-8 mm



SACP38

Type: Soft / Hard
 Size: 1240x3000 mm
 Thickness: 4-6 mm



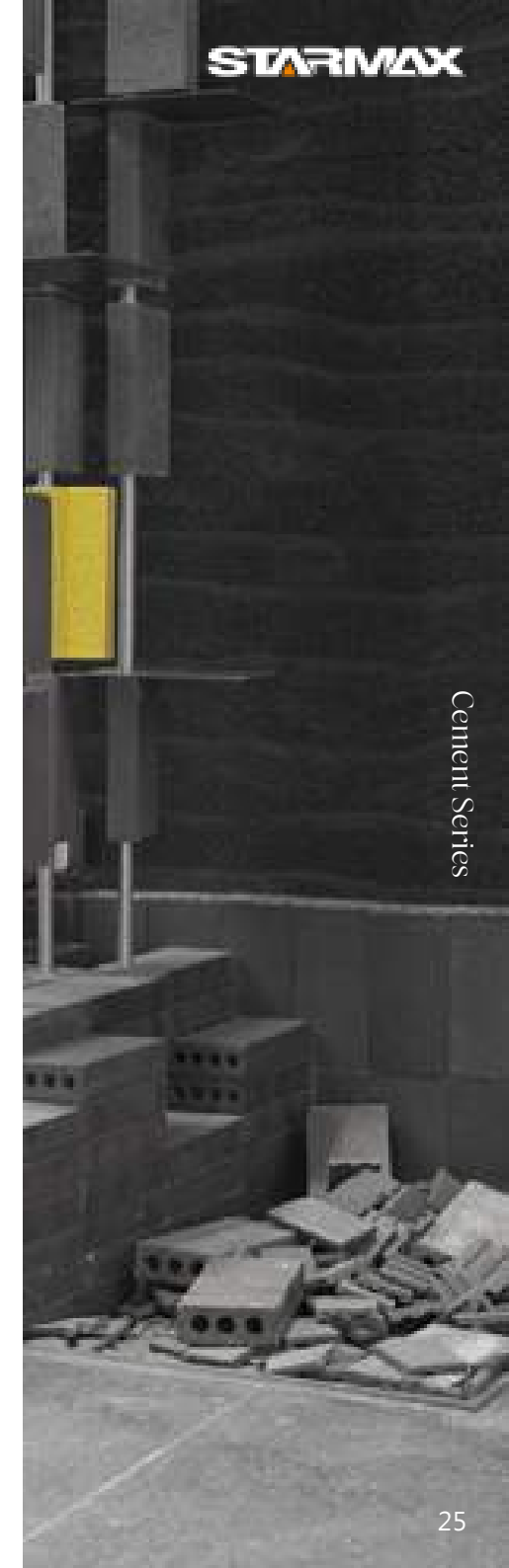
SACP39

Type: Soft / Hard
 Size: 1240x3000 mm
 Thickness: 4-6 mm

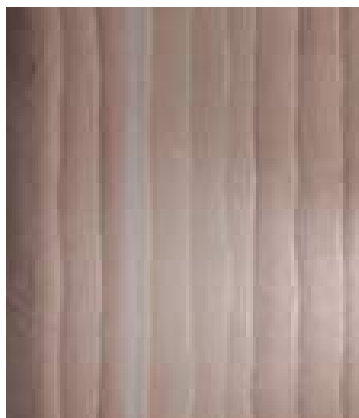


SACP40

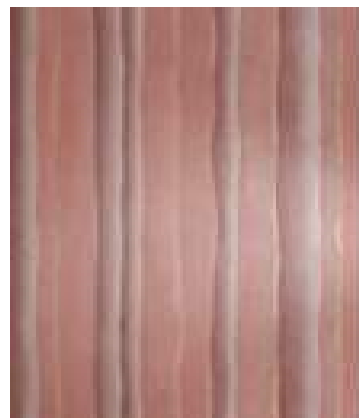
Type: Soft / Hard
 Size: 1240x3000 mm
 Thickness: 4-6 mm







SACP41
 Type: Soft / Hard
 Size: 1220x3000 mm
 Thickness: 6-8 mm



SACP42
 Type: Hard
 Size: 1220x3000 mm
 Thickness: 6-8 mm



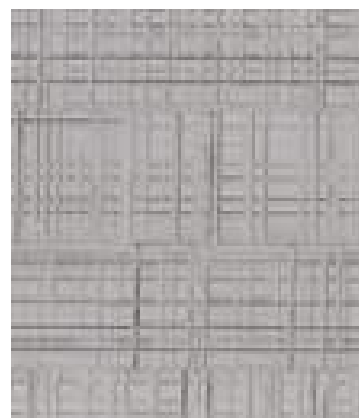
SACP43
 Type: Hard
 Size: 590x2990 mm
 Thickness: 15-20 mm



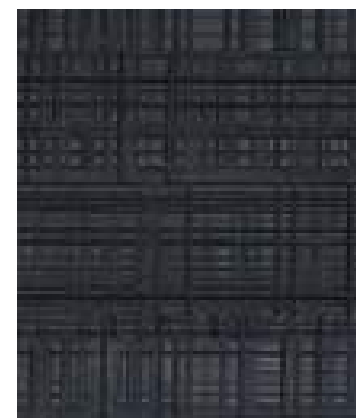
SACP44
 Type: Hard
 Size: 1240x3000 mm
 Thickness: 6-8 mm



SACP45
 Type: Hard
 Size: 1240x3000 mm
 Thickness: 6-8 mm



SACP46
 Type: Hard
 Size: 1260x3250 mm
 Thickness: 6-8 mm

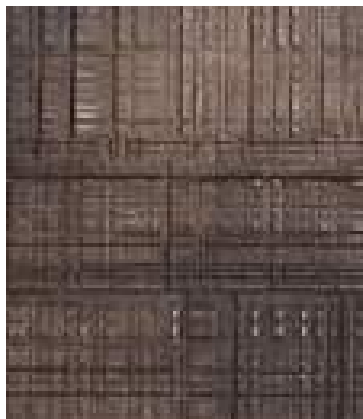


SACP47
 Type: Hard
 Size: 1260x3250 mm
 Thickness: 6-8 mm



SACP48
 Type: Hard
 Size: 1260x3250 mm
 Thickness: 6-8 mm





SACP49

Type: Hard
 Size: 1260x3250 mm
 Thickness: 6-8 mm



SACP50

Type: Soft / Hard
 Size: 1220x3000 mm
 Thickness: 8-10 mm



SACP51

Type: Soft / Hard
 Size: 1200x3000 mm
 Thickness: 6-8 mm



SACP52

Type: Hard
 Size: 1250x3100 mm
 Thickness: 6-8 mm



SACP53

Type: Hard
 Size: 1250x3100 mm
 Thickness: 6-8 mm



SACP54

Type: Soft / Hard
 Size: 1250x3100 mm
 Thickness: 6-8 mm



SACP55

Type: Hard
 Size: 1250x3250 mm
 Thickness: 15-20 mm



SACP56

Type: Hard
 Size: 1250x3250 mm
 Thickness: 15-20 mm







SACP57
 Type: Hard
 Size: 1250x3250 mm
 Thickness: 15-20 mm



SACP58
 Type: Hard
 Size: 1250x3250 mm
 Thickness: 15-20 mm



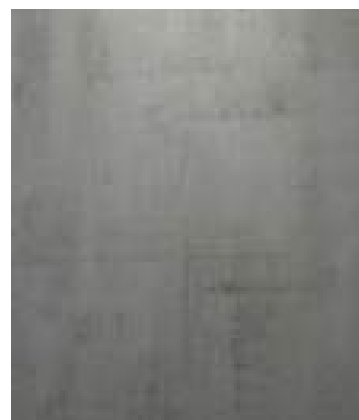
SACP59
 Type: Hard
 Size: 1250x3250 mm
 Thickness: 10-20 mm



SACP60
 Type: Soft / Hard
 Size: 1220x3000 mm
 Thickness: 8-10 mm



SACP61
 Type: Soft / Hard
 Size: 1220x3000 mm
 Thickness: 8-10 mm



SACP62
 Type: Hard
 Size: 900x1800 mm
 Thickness: 6-8 mm

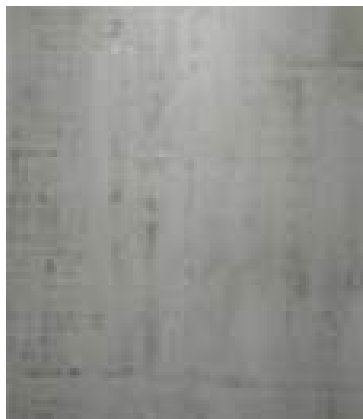


SACP63
 Type: Hard
 Size: 900x1800 mm
 Thickness: 6-8 mm



SACP64
 Type: Soft
 Size: 900x1800 mm
 Thickness: 6-8 mm





SACP65

Type: Soft
Size: 900x1800 mm
Thickness: 6-8 mm



SACP66

Type: Hard
Size: 900x1800 mm
Thickness: 6-8 mm



SACP67

Type: Soft
Size: 900x1800 mm
Thickness: 6-8 mm



SACP68

Type: Hard
Size: 1220x2440 mm
Thickness: 3-5 mm



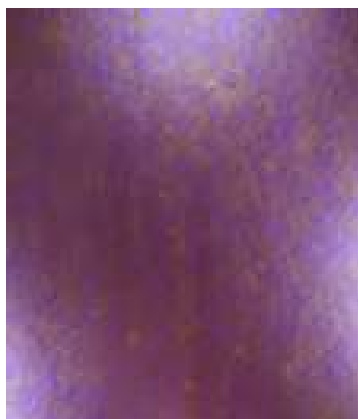
SACP69

Type: Hard
Size: 1220x2440 mm
Thickness: 3-5 mm



SACP70

Type: Hard
Size: 1220x2440 mm
Thickness: 3-5 mm



SACP71

Type: Hard
Size: 1220x2440 mm
Thickness: 3-5 mm



SACP72

Type: Hard
Size: 1220x2440 mm
Thickness: 3-5 mm





STARMAX

STARMAX



Cement Series



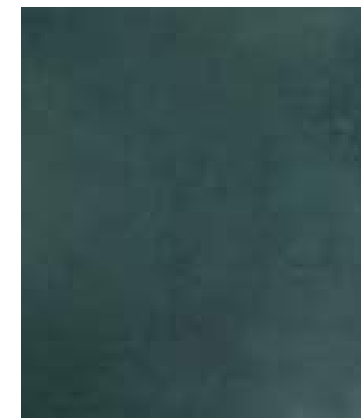
SACP73
 Type: Hard
 Size: 1220x2440 mm
 Thickness: 3-5 mm



SACP74
 Type: Hard
 Size: 1220x2440 mm
 Thickness: 3-5 mm



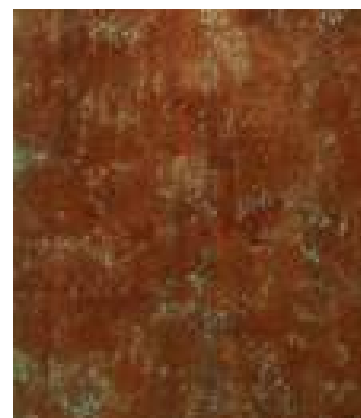
SACP75
 Type: Hard
 Size: 1220x2440 mm
 Thickness: 3-5 mm



SACP76
 Type: Hard
 Size: 1220x2440 mm
 Thickness: 3-5 mm



SACP77
 Type: Hard
 Size: 1220x2440 mm
 Thickness: 3-5 mm



SACP78
 Type: Hard
 Size: 1220x2440 mm
 Thickness: 3-5 mm



SACP79
 Type: Hard
 Size: 1220x2440 mm
 Thickness: 3-5 mm



SACP80
 Type: Hard
 Size: 1220x2440 mm
 Thickness: 3-5 mm





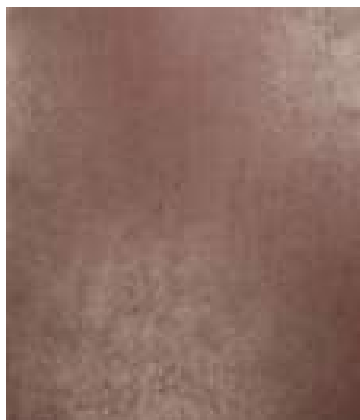
SACP81

Type: Hard
Size: 1220x2440 mm
Thickness: 3-5 mm



SACP82

Type: Hard
Size: 1220x2440 mm
Thickness: 3-5 mm



SACP83

Type: Hard
Size: 1220x2440 mm
Thickness: 3-5 mm



SACP84

Type: Hard
Size: 1220x2440 mm
Thickness: 3-5 mm



SACP85

Type: Hard
Size: 1220x2440 mm
Thickness: 3-5 mm



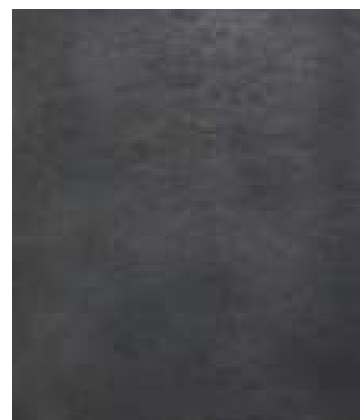
SACP86

Type: Hard
Size: 1220x2440 mm
Thickness: 3-5 mm



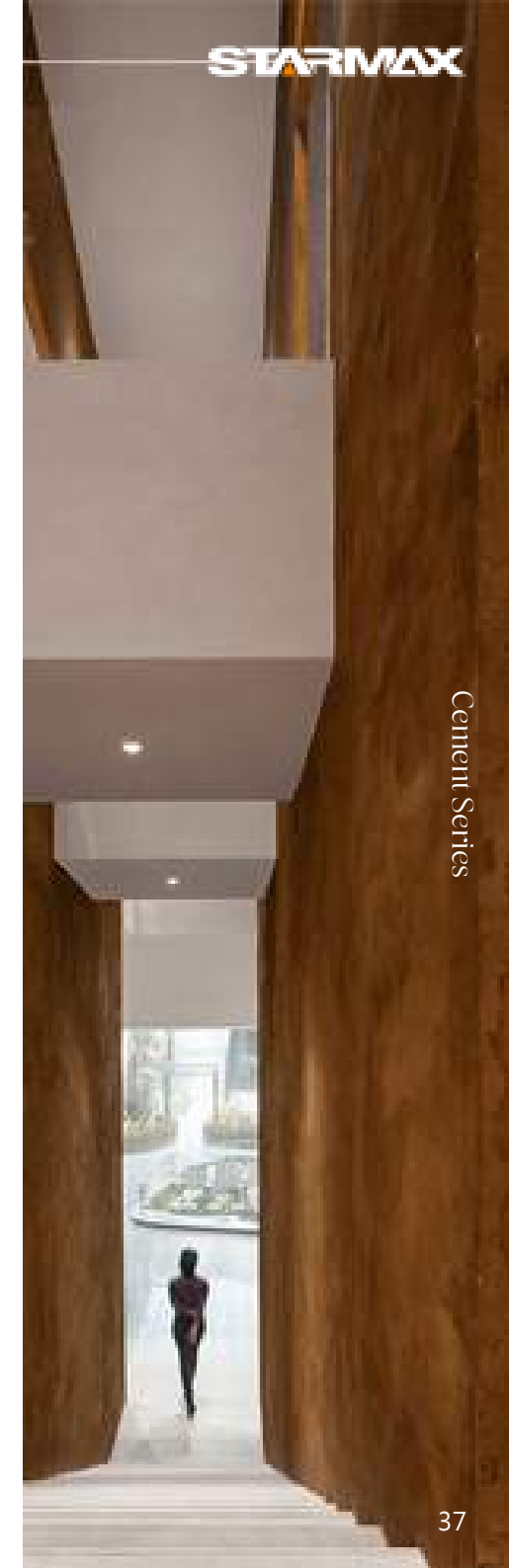
SACP87

Type: Hard
Size: 1220x2440 mm
Thickness: 3-5 mm



SACP88

Type: Hard
Size: 1320x3340 mm
Thickness: 5-13 mm





STARMAX



Cement Series



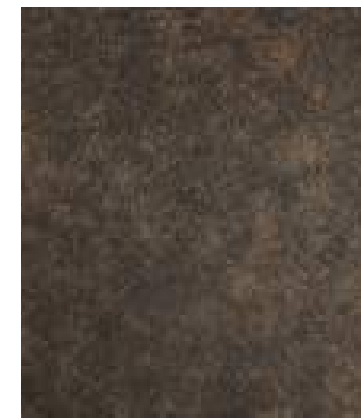
SACP89
 Type: Hard
 Size: 1320x3340 mm
 Thickness: 5-13 mm



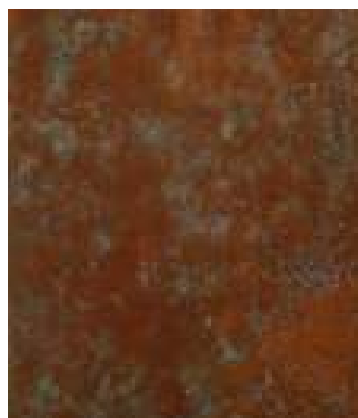
SACP90
 Type: Hard
 Size: 1320x3340 mm
 Thickness: 5-13 mm



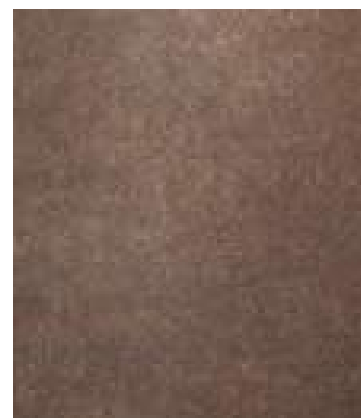
SACP91
 Type: Hard
 Size: 1220x3000 mm
 Thickness: 8-10 mm



SACP92
 Type: Hard
 Size: 1210x3200 mm
 Thickness: 8-10 mm



SACP93
 Type: Hard
 Size: 1210x3200 mm
 Thickness: 8-10 mm



SACP94
 Type: Hard
 Size: 1210x3200 mm
 Thickness: 8-10 mm



SACP95
 Type: Soft
 Size: 570x2400 mm
 Thickness: 3-5 mm



SACP96
 Type: Soft
 Size: 570x2400 mm
 Thickness: 3-5 mm





SACP97
 Type: Soft
 Size: 570x2400 mm
 Thickness: 3-5 mm



SACP98
 Type: Soft
 Size: 570x2400 mm
 Thickness: 3-5 mm



SACP99
 Type: Soft
 Size: 570x2400 mm
 Thickness: 3-5 mm



SACP100
 Type: Soft
 Size: 960x2800 mm
 Thickness: 3-5 mm



SACP101
 Type: Soft
 Size: 960x2800 mm
 Thickness: 3-5 mm



SACP102
 Type: Hard
 Size: 570x2400 mm
 Thickness: 3-7 mm



SACP103
 Type: Hard
 Size: 570x2400 mm
 Thickness: 3-7 mm



SACP104
 Type: Hard
 Size: 570x2400 mm
 Thickness: 3-7 mm







SACP105
 Type: Hard
 Size: 570x2400 mm
 Thickness: 3-7 mm



SACP106
 Type: Soft / Hard
 Size: 580x3100 mm
 Thickness: 5-7 mm



SACP107
 Type: Soft / Hard
 Size: 580x3100 mm
 Thickness: 5-7 mm



SACP108
 Type: Soft / Hard
 Size: 580x3100 mm
 Thickness: 5-7 mm



SACP109
 Type: Hard
 Size: 580x3100 mm
 Thickness: 5-7 mm



SACP110
 Type: Soft
 Size: 1200x3300 mm
 Thickness: 4-8 mm



SACP111
 Type: Soft
 Size: 1200x3260 mm
 Thickness: 4-8 mm



SACP112
 Type: Hard
 Size: 570x2330 mm
 Thickness: 6-15 mm





SACP113

Type: Hard
Size: 570x2330 mm
Thickness: 6-15 mm

SACP114

Type: Hard
Size: 570x2330 mm
Thickness: 6-15 mm

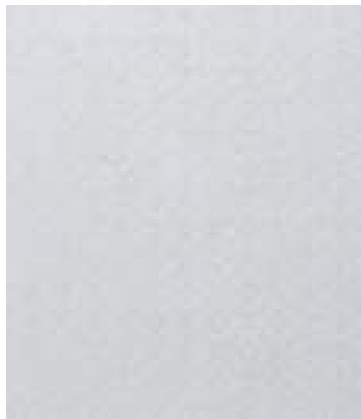
SACP115

Type: Hard
Size: 570x2330 mm
Thickness: 6-15 mm

SACP116

Type: Hard
Size: 590x2980 mm
Thickness: 6-8 mm

STARMAX



SACP117

Type: Hard
Size: 590x2980 mm
Thickness: 6-8 mm

SACP118

Type: Hard
Size: 590x2980 mm
Thickness: 6-8 mm

SACP119

Type: Hard
Size: 590x2980 mm
Thickness: 6-8 mm

SACP120

Type: Hard
Size: 590x2980 mm
Thickness: 10-15 mm



Concrete Series





SACP121
 Type: Hard
 Size: 590x2980 mm
 Thickness: 10-15 mm



SACP122
 Type: Hard
 Size: 590x2980 mm
 Thickness: 10-15 mm



SACP123
 Type: Hard
 Size: 590x2980 mm
 Thickness: 10-15 mm



SACP124
 Type: Hard
 Size: 1180x2980 mm
 Thickness: 8-15 mm



SACP125
 Type: Hard
 Size: 1180x2980 mm
 Thickness: 8-15 mm



SACP126
 Type: Hard
 Size: 580x2990 mm
 Thickness: 8-12 mm



SACP127
 Type: Hard
 Size: 580x2990 mm
 Thickness: 8-12 mm



SACP128
 Type: Hard
 Size: 580x2990 mm
 Thickness: 6-18 mm





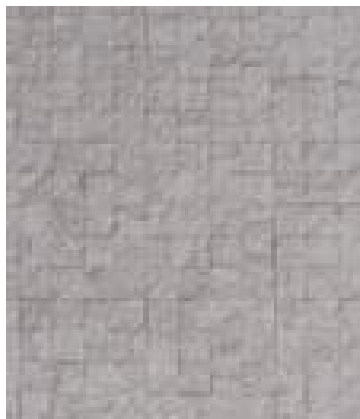
SACP129

Type: Hard
 Size: 580x2990 mm
 Thickness: 6-18 mm



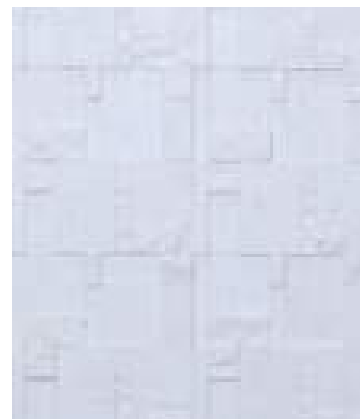
SACP130

Type: Hard
 Size: 580x2980 mm
 Thickness: 8-18 mm



SACP131

Type: Hard
 Size: 580x2980 mm
 Thickness: 8-18 mm



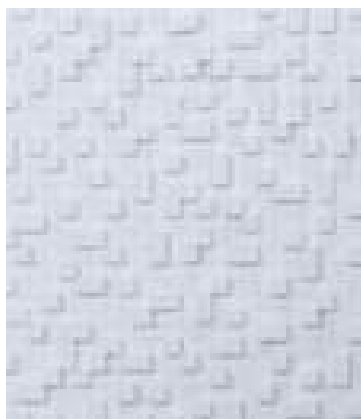
SACP132

Type: Hard
 Size: 580x2980 mm
 Thickness: 8-15 mm



SACP133

Type: Hard
 Size: 580x2980 mm
 Thickness: 8-15 mm



SACP134

Type: Hard
 Size: 580x2980 mm
 Thickness: 10-20 mm



SACP135

Type: Hard
 Size: 580x2980 mm
 Thickness: 10-20 mm



SACP136

Type: Hard
 Size: 800x800 mm
 Thickness: 8-10 mm



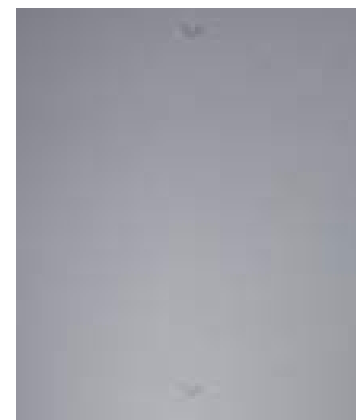




SACP137
 Type: Hard
 Size: 600x600 mm
 Thickness: 6-8 mm



SACP138
 Type: Hard
 Size: 600x1200 mm
 Thickness: 6-8 mm



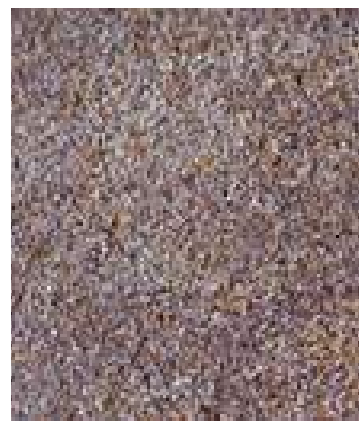
SACP139
 Type: Hard
 Size: 600x1200 mm
 Thickness: 6-8 mm



SACP140
 Type: Soft / Hard
 Size: 1000x2800 mm
 Thickness: 4-6 mm



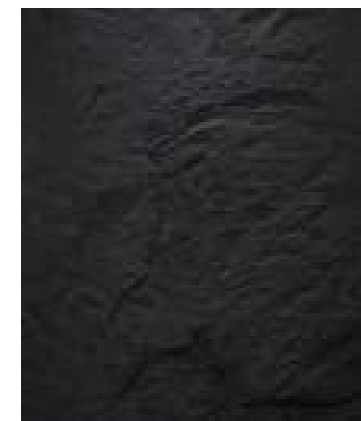
SACP141
 Type: Soft / Hard
 Size: 1220x3000 mm
 Thickness: 4-6 mm



SACP142
 Type: Hard
 Size: 1200x3000 mm
 Thickness: 6-8 mm



SACP143
 Type: Hard
 Size: 1220x2400 mm
 Thickness: 6 mm



SACP144
 Type: Hard
 Size: 1250x3250 mm
 Thickness: 8-15 mm



**SACP145**

Type: Hard
Size: 1200x3260 mm
Thickness: 4-8 mm

**SACP146**

Type: Hard
Size: 1200x3260 mm
Thickness: 4-8 mm

CASE
APPRECIATION

STARMAX









*CEMENT
POURING PANEL*

Product Description

The cement pouring panel comprises specially prepared concrete raw materials through pouring and molding. Its core is fiber-reinforced concrete and ultra-light composite materials, and a protective film is sprayed on the surface. On the premise of maintaining the original concrete texture, our cement pouring panel achieves a more efficient and convenient installation effect than concrete. It is more durable and weather-resistant and has a wide range of applications, including the interior and exterior walls and ceilings of commercial spaces such as office buildings, hotels, and exhibition halls.

Cement Series





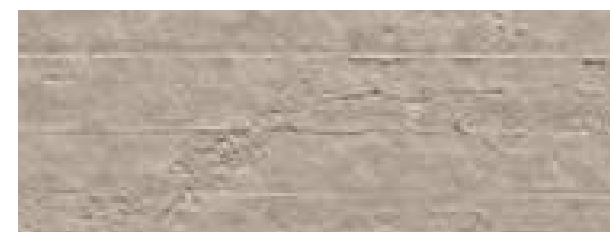
STARMAX



SCPPA01 Color: Clear WaterCement Color
Type: Horizontal Stripes Size: 3x1240x3250 mm



SCPPA02 Color: Rammed Earth
Type: Horizontal Stripes Size: 3x1240x3250 mm



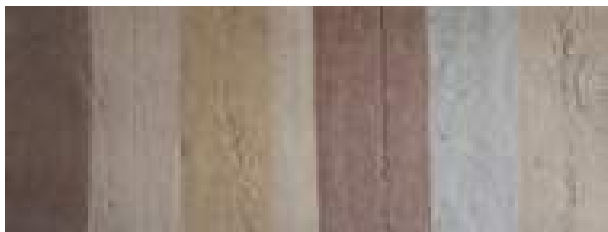
SCPPA03 Color: Rammed Earth
Type: Horizontal Stripes Size: 3x1240x3250 mm



SCPPA04 Color: Ancient Gray
Type: Vertical Stripes Size: 3x1220x3050 mm

Cement Series





SCPPA05 Color: Colorful
Type: Vertical Stripes Size: 3x1220x3050 mm



SCPPA06 Color: Colorful
Type: Horizontal Stripes Size: 3x1240x3250 mm



SCPPA07 Color: Clear Water Cement Color
Type: Vertical Stripes Size: 3x1220x3050 mm



SCPPA08 Color: Color Mixing
Type: Horizontal Stripes Size: 3x1240x3250 mm



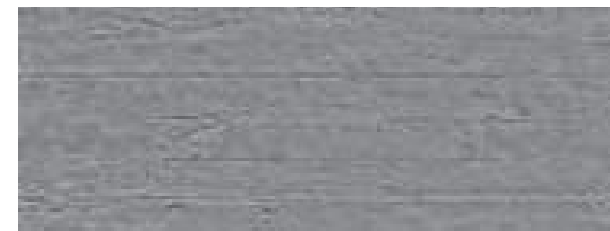


STARMAX



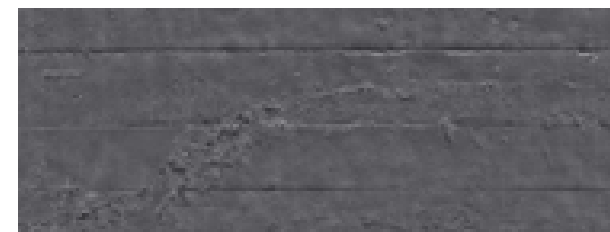
STARMAX

Cement Series



SCPPA09
Type: Horizontal Stripes

Color: Medium Gray
Size: 3x1240x3250 mm



SCPPA10
Type: Horizontal Stripes

Color: Black
Size: 3x1240x3250 mm



SCPPA11
Type: Horizontal Stripes

Color: Gray Mixed Color
Size: 3x1240x3250 mm

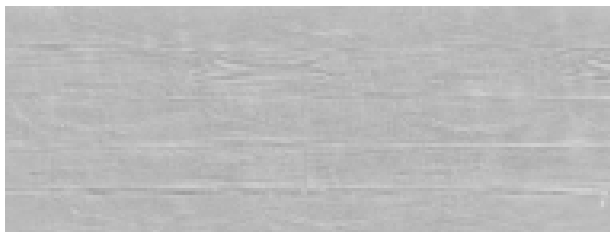


SCPPA12
Type: Horizontal Stripes

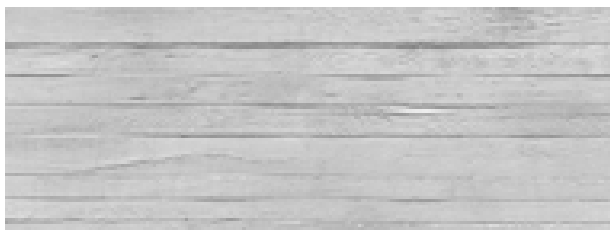
Color: Clear Water Cement Color
Size: 3x1200x3030 mm



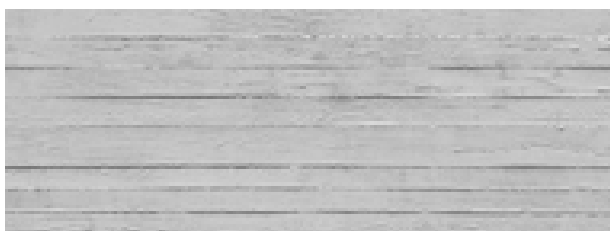




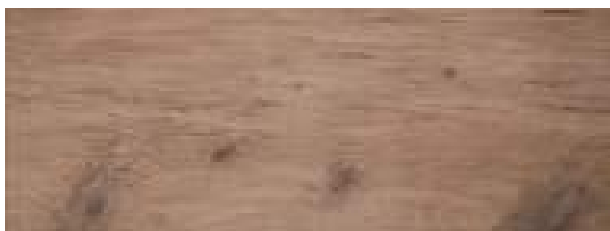
SCPPA13 Color: Clear Water Cement Color
 Type: Horizontal Stripes Size: 3x1200x3030 mm



SCPPA14 Color: Clear Water Cement Color
 Type: Horizontal Stripes Size: 3x1200x3050 mm



SCPPA15 Color: Clear Water Cement Color
 Type: Horizontal Stripes Size: 3x1200x3050 mm



SCPPA16 Color: Pale Yellow
 Type: Wood Stripes Size: 3x950x3000 mm





Cement Series

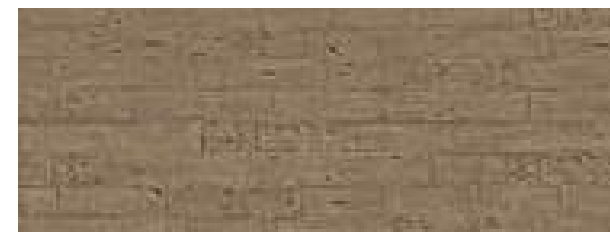
555
a. e. logo
linea home
555 555 555
555 555 555



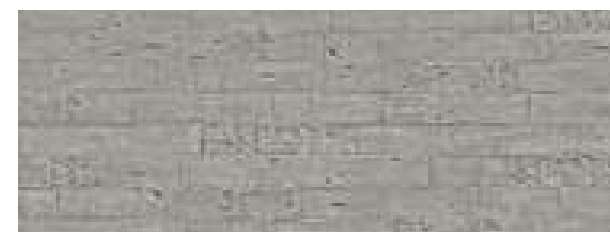
STARMAX



SCPPA17 Color: Light Ancient Brown
Type: Horizontal Stripes Size: 3x1250x3050 mm



SCPPA18 Color: Light Ancient Brown
Type: Horizontal Stripes Size: 3x1250x3050 mm



SCPPA19 Color: Ancient Gray
Type: Horizontal Stripes Size: 3x1250x3050 mm



SCPPA20 Color: Black
Type: Horizontal Stripes Size: 3x1200x3030 mm

Cement Series



Cement Series

STARMAX





SCPPA21 Color: Clear Water Cement Color
Type: Horizontal/Vertical stripes Size: 3x1200x3050 mm



SCPPA22 Color: Off White
Type: Horizontal/Vertical stripes Size: 3x1200x3050 mm



SCPPA23 Color: Ancient Brown
Type: Horizontal/Vertical Size: 3x1190x3000 mm



SCPPA24 Color: Do Old Color
Type: Horizontal/Vertical Size: 3x1190x3000 mm

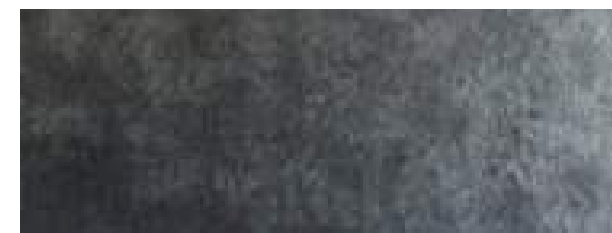






STARMAX

Cement Series



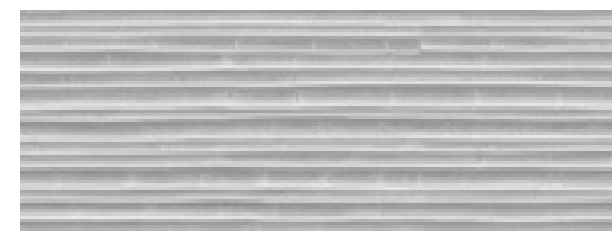
SCPPA25
Type: Horizontal/Vertical

Color: Grey Blue
Size: 3x1190x3000 mm



SCPPA26
Type: Embossed

Color: Clear Water Cement Color
Size: 3x600x3100 mm



SCPPA27
Type: Dimple

Color: Clear Water Cement Color
Size: 3x600x3100 mm



SCPPA28
Type: Embossed

Color: Rammed Earth
Size: 3x600x3100 mm

STARMAX

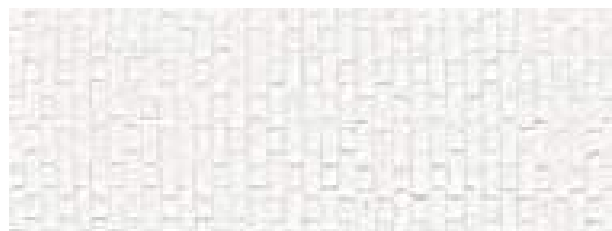
Cement Series





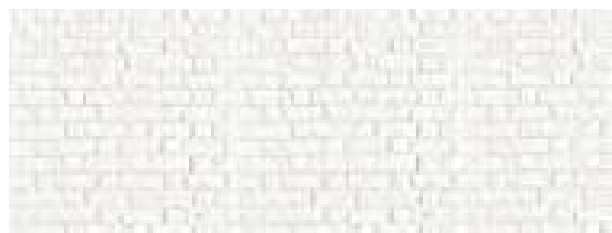
SCPPA29
Type: Dimple

Color: Rammed Earth
Size: 3x600x3100 mm



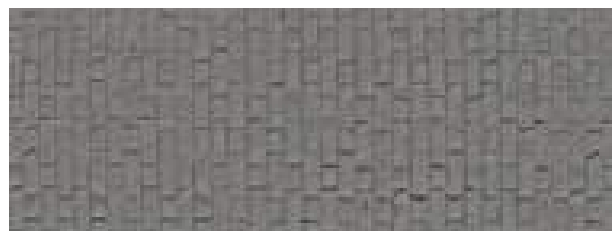
SCPPA30
Type: Vertical Stripes

Color: White
Size: 3x1220x3050 mm



SCPPA31
Type: Horizontal Stripes

Color: White
Size: 3x1220x3050 mm

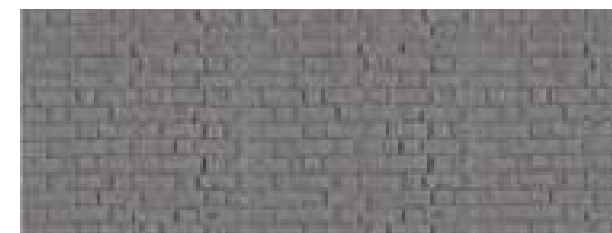


SCPPA32
Type: Vertical Stripes

Color: Blue Gray
Size: 3x1220x3050 mm







SCPPA33
Type: Horizontal Stripes

Color: Blue Gray
Size: 3x1220x3050 mm

CASE
APPRECIATION

STARMAX





STARMAX

Cement Series





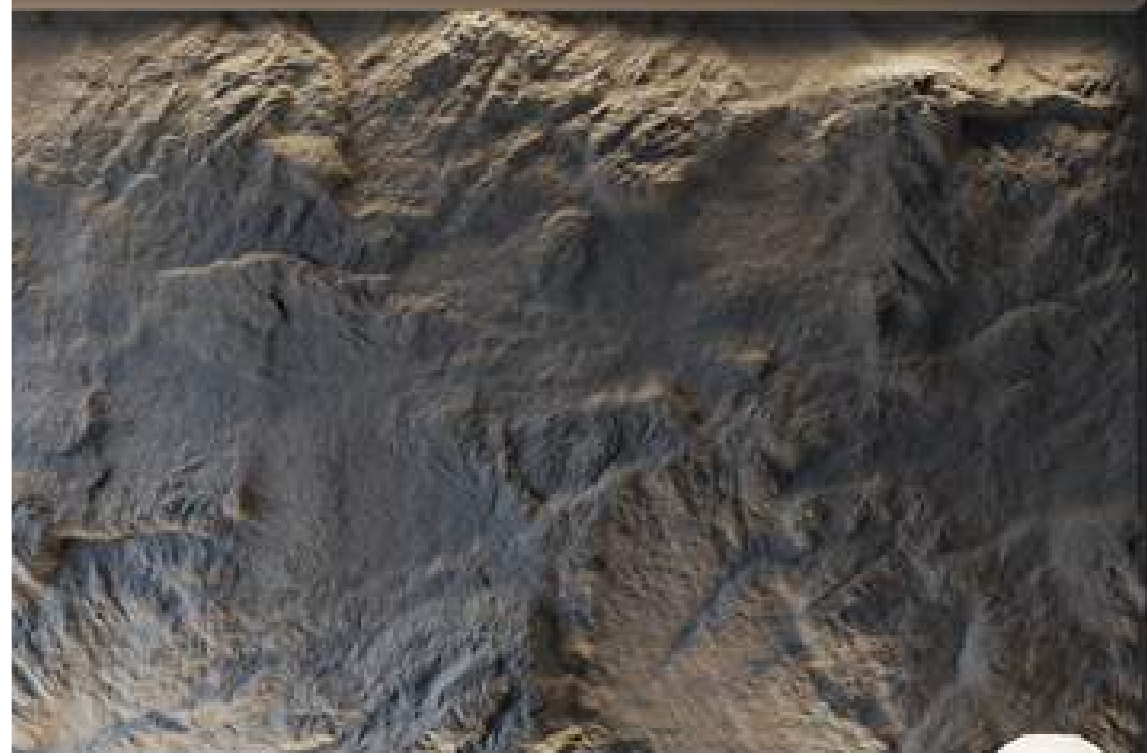
008 826200

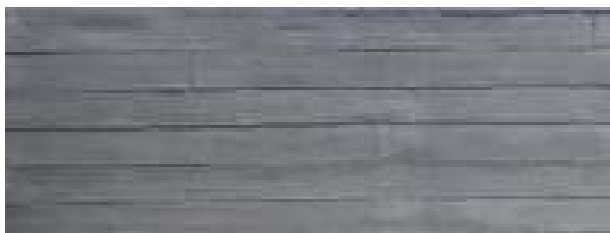


*FRP CEMENT
POURING PANEL*

Product Description

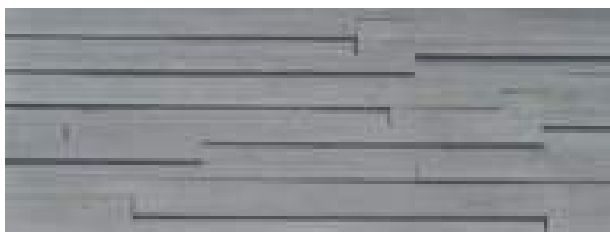
The FRP cement pouring panel shows the rustic natural color of concrete. The rough appearance can not only express concrete's naturalness, elegance, and simplicity but also has the characteristics of generosity and solemnity. FRP cement pouring panel has high strength, is not easy to explode, and has a waterproof and moisture-proof effect. As a product with excellent quality and high stability, the FRP cement pouring panel is suitable for various occasions, extending from art centers and museums to more occasions, such as commercial places, office places, entertainment places, sports places and families, schools, exhibition halls, and other spaces.



**SFRPA01**

Size: 1200x3000 mm

Thickness: 3-5 mm

**SFRPA02**

Size: 1200x3000 mm

Thickness: 3-6 mm

**SFRPA03**

Size: 1200x3000 mm

Thickness: 3-4 mm

**SFRPA04**

Size: 1300x3000 mm

Thickness: 3-6 mm





**SFRPA05**

Size: 1200x3200 mm

Thickness: 3-6 mm

**SFRPA06**

Size: 1200x3200 mm

Thickness: 3-30 mm

**SFRPA07**

Size: 1000x3000 mm

Thickness: 3-6 mm

**SFRPA08**

Size: 950x3100 mm

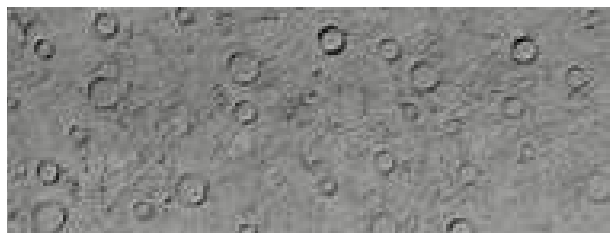
Thickness: 3-6 mm



STARMAX



Centuri Series



SFRPA09

Size: 1200x3000 mm

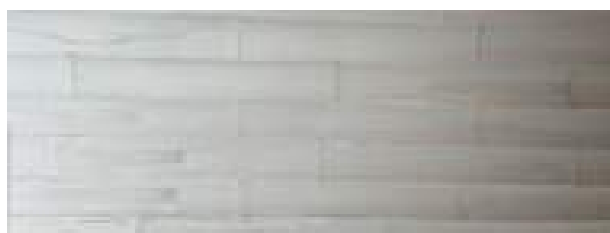
Thickness: 3-5 mm



SFRPA10

Size: 1200x3200 mm

Thickness: 2-4 mm



SFRPA11

Size: 600x3150 mm

Thickness: 3-6 mm



SFRPA12

Size: 600x3150 mm

Thickness: 3-6 mm





STARMAX



STARMAX

Cement Series

**SFRPA13**

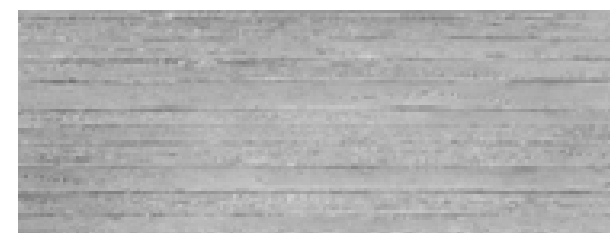
Size: 1200x3200 mm

Thickness: 3-5 mm

**SFRPA14**

Size: 1200x3200 mm

Thickness: 3-7 mm

**SFRPA15**

Size: 1200x3200 mm

Thickness: 3-5 mm

**SFRPA16**

Size: 1200x3200 mm

Thickness: 3-10 mm

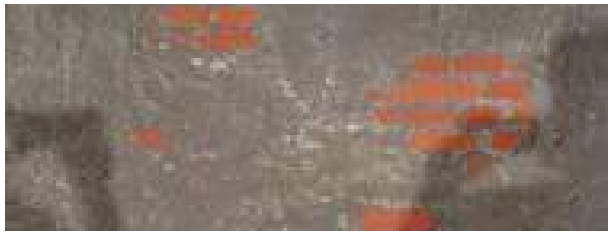


STARMAX



STARMAX

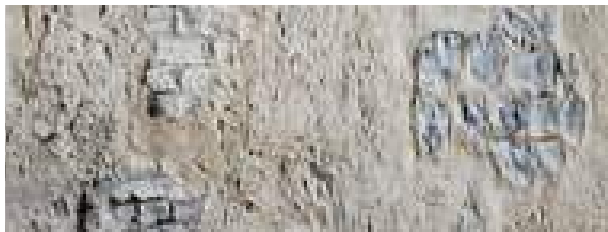
Cement Series



SFRPA17

Size: 1200x3200 mm

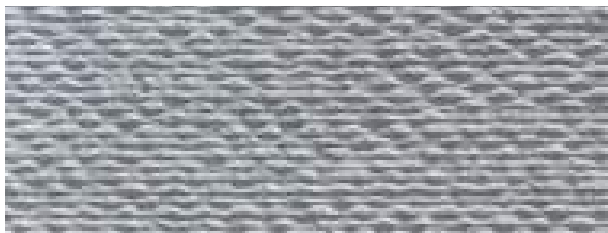
Thickness: 3-8 mm



SFRPA18

Size: 1200x3200 mm

Thickness: 3-10 mm



SFRPA19

Size: 1000x2900 mm

Thickness: 3-6 mm



SFRPA20

Size: 1300x3200 mm

Thickness: 3-10 mm







STARMAX

**SFRPA21**

Size: 1180x3200 mm

Thickness: 3-5 mm

**SFRPA22**

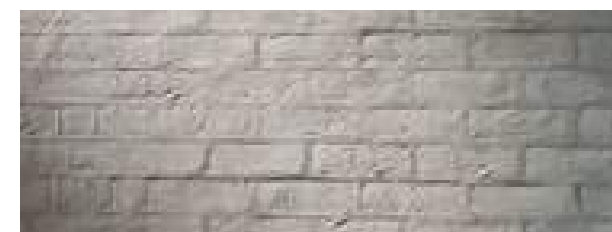
Size: 1200x3000 mm

Thickness: 3-35 mm

**SFRPA23**

Size: 1200x3000 mm

Thickness: 3-35 mm

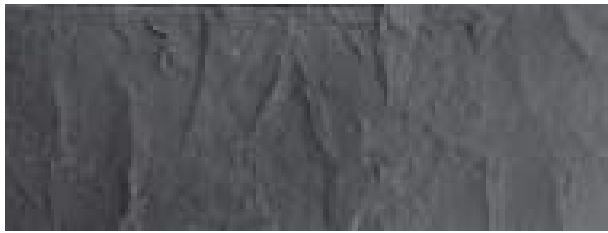
**SFRPA24**

Size: 1300x2850 mm

Thickness: 3-5 mm

Cement Series





SFRPA25

Size: 985x2980 mm

Thickness: 3-15 mm



SFRPA26

Size: 1200x3200 mm

Thickness: 3-10 mm



SFRPA27

Size: 1150x2900 mm

Thickness: 3-5 mm



SFRPA28

Size: 400x2370 mm

Thickness: 10-20 mm



STARMAX



STARMAX



Cement Series



SFRPA29

Size: 580x2340 mm

Thickness: 10-20 mm



SFRPA30

Size: 590x2370 mm

Thickness: 10-20 mm



SFRPA31

Size: 770x2340 mm

Thickness: 10-20 mm



SFRPA32

Size: 390x2390 mm

Thickness: 10-20 mm

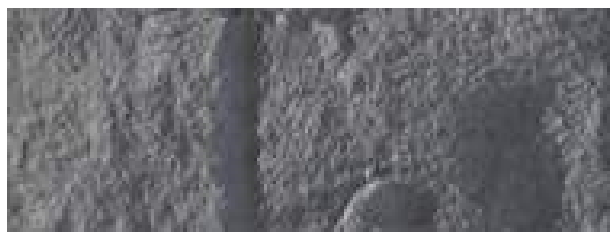




SFRPA33

Size: 770x2310 mm

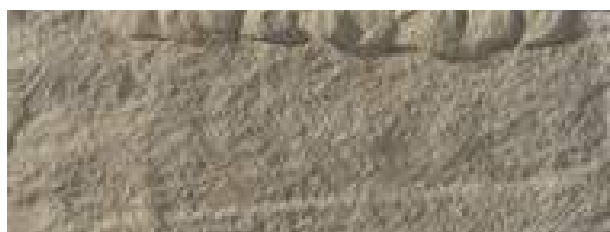
Thickness: 10-20 mm



SFRPA34

Size: 600x1200 mm

Thickness: 20-25 mm



SFRPA35

Size: 600x1200 mm

Thickness: 20-25mm



SFRPA36

Size: 600x1200 mm

Thickness: 20-25 mm





Cement Series

CASE
APPRECIATION

STARMAX





STARMAX

Cement Series





*CEMENT
DECORATED
SLOTTED PANEL*

Product Description

The FRP cement pouring panel shows the rustic natural color of concrete. The rough appearance can not only express concrete's naturalness, elegance, and simplicity but also has the characteristics of generosity and solemnity. FRP cement pouring panel has high strength, is not easy to explode, and has a waterproof and moisture-proof effect. As a product with excellent quality and high stability, the FRP cement pouring panel is suitable for various occasions, extending from art centers and museums to more occasions, such as commercial places, office places, entertainment places, sports places and families, schools, exhibition halls, and other spaces.

**SCSPA01**

Size: 1220x2440x12 mm

**SCSPA02**

Size: 1220x2440x12 mm

**SCSPA03**

Size: 1220x2440x12 mm

**SCSPA04**

Size: 1220x2440x12 mm

**SCSPA05**

Size: 1220x2440x12 mm

**SCSPA06**

Size: 1220x2440x12 mm





SCSPA07
Size: 1220x2440x12 mm



SCSPA08
Size: 1220x2440x12 mm



SCSPA09
Size: 1220x2440x12 mm



SCSPA10
Size: 1220x2440x12 mm



SCSPA11
Size: 1220x2440x12 mm



SCSPA12
Size: 1220x2440x12 mm





SCSPA13
Size: 1220x2440x12 mm



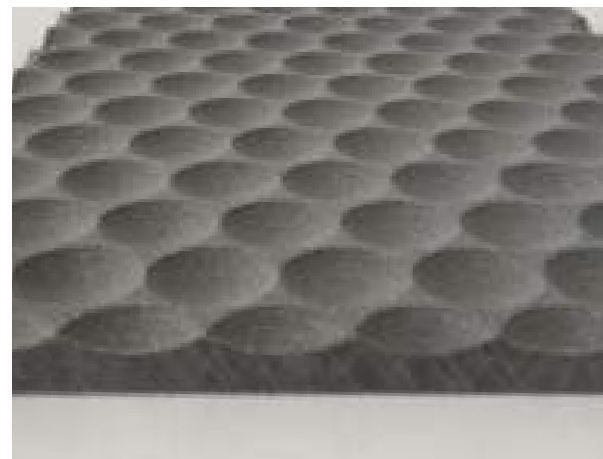
SCSPA14
Size: 1220x2440x12 mm



SCSPA15
Size: 1220x2440x12 mm



SCSPA16
Size: 1220x2440x12 mm



SCSPA17
Size: 1220x2440x12 mm



SCSPA18
Size: 1220x2440x12 mm

STARMAX

Cement Series



SCSPA20

Size: 1220x2440x12 mm



SCSPA21

Size: 1220x2440x12 mm



SCSPA22

Size: 1220x2440x12 mm



SCSPA23

Size: 1220x2440x12 mm



STARMAX

Centium Series

CASE
APPRECIATION

STARMAX



STARMAX



Century Series





STARMAX

Cement Series





SYNESMOON

INSTALLATION GUIDE

Installation Method Of Transparent cement

Dry Hanging Installation

1. Grassroots treatment

Install the steel skeleton and channel steel columns.

2. Welding keel beam

Weld the 5mm x 5mm beam angle steel on the column according to the height of the transparent cement (you can adjust the horizontal plane of the panel through the fine-tuning bolts on both sides of the queue before welding firmly). Considering the thickness of the butterfly buckle (about 5mm) and the caulking agent's height, the keel layer's size should be 7mm-10mm higher than that of the transparent cement from the second floor.

3. Hang vertical lines

Hang the vertical plane line from the top of the curtain wall, and this plane line can be selected at the right corner of the curtain wall plane.

4. Pull the horizontal line

Determine the position of the bottom edge of the stone curtain wall according to the actual design and construction conditions, and draw a horizontal line and a block line between the two vertical lines. Horizontal and vertical lines determine the plane of the curtain wall.

5. Install light strips

Generally, the lights used in transparent cement are LED light panels, light strips, or light tubes. This depends on the different application scenarios, and the lighting effects are also different. If it is outdoor lighting, it is recommended to choose an LED light strip with specific waterproof performance and do waterproof treatment for the interface of the thread head.

If it is used as a transparent cement board on the wall, it is recommended to reserve an inspection port in advance, and the inspection port can be reserved on the back of the cement board wall. If there are transparent cement boards on two or four sides or a hollow light-transmitting concrete wall, inspection openings are usually left on the top or inside in advance, including lamp replacement and line inspection.

6. Install the pendant

Each layer of beams is installed on the angle steel beams with butterfly buckles through bolts.

7. Hanging panels

Use a trowel to thickly coat the base of the wall with a layer of paste mortar to level it out. After 1 hour, you can hang the board. Move the lower insert of the butterfly buckle into the groove above the first transparent cement panel on the first layer.

Adjust the panels to make the transparent cement slab vertical, level the panel with a ruler pallet and wooden wedges, fix the panel, and then hang the second and third pieces in order. Similarly, when hanging the second-layer panel, check whether the upper opening is level after each piece is in place.

If the upper opening of the panel is uneven, you can place a corresponding double-strand copper wire pad on the upper insert of the butterfly buckle at the bottom of the panel to level it out. After every five layers of panels are installed, the hanging wire is checked once to eliminate errors in time. Finally, inject marble glue into the groove to solidify and position, and continue to hang the third layer, the fourth layer...

8. Seam sealing

Fill the joints between the two layers of transparent cement panels with rubber or foam strips, then apply joint-sealing mortar. First, hook the horizontal seam, and the depth of the seam should be consistent.

9. Surface cleaning

Clean dirt from the finish with a rag and polish unevenness in the cement finish with a knife or hand-held polisher.

Block Installation

1. Before construction, the contractor shall measure the size according to the design drawing and the actual construction site. The transparent cement brick laying adopts the cross-joint vertical brick laying method.

2. According to the area and shape of the transparent cement partition wall to be built, first calculate the quantity and arrangement order of the transparent cement. The interval between two transparent cement board joints is 2-5mm.

3. Make the bottom corner of the foundation according to the arrangement of the transparent cement, and the thickness of the bottom corner is usually 40mm or 70mm.

4. The side of the building wall connected to the transparent cement should be trimmed and vertical.

5. Transparent cement must have an appropriate supporting structure and must be built in a metal frame, and the frame should be fixed first.
6. Make an excellent waterproof layer and protective layer. Use padded wood to level and control the elevation.
7. The structure supporting the transparent cement must go through structural calculations, and the horizontal and vertical lines of the construction area must be pulled up accurately according to the site. Otherwise, there may be a possibility of tipping over. The first layer of masonry should be marked on both sides. Several branch points should be set in the middle of the long transparent cement partition wall.
8. Each layer of transparent cement needs to be reinforced with steel bars. If the area is large, it must be done to avoid collapse.
9. The stainless steel frame can be added according to the shape requirements. If the stainless steel frame is not used, the construction of transparent cement must be embedded in the wall or decoration.
10. Use the prepared long pieces of wood as horizontal fixing boards. After laying the first piece of transparent cement in each row, insert it into the gap between the fixed interval frames above it. The transparent cement in the same row can be fixed accordingly and determine the horizontal position (these fixed plates will be covered with a unique adhesive and do not need to be removed)

Installation Method Of Pouring Panel

Paste Installation

1. Blank foundation wall foundation paste method

- 1.1 Paint the wall with cement mortar, and it is recommended to use high-grade cement for leveling.
- 1.2 Dust on the surface of the stucco layer needs to be cleaned and removed.
- 1.3 The original mixed batch embedded wall, with 801 glue plus interface agent or adhesive batch embedded or roller coated at least twice. After the dry and ash-free wall, it can be pasted and installed according to the layout line.
- 1.4 The natural splicing process is adopted between the board and the board interface. The foam double-sided adhesive is aligned along the board edge (leveling effect), and the structural adhesive is applied along the foam double-sided adhesive line: the seam installation process, according to the distance of the gap, adopts leveling device that is fixed.
- 1.5 Structural glue should be used with double-sided foam tape (recommended width 15-18mm) or other positioning glue. The structural glue should be glued linearly, and the bond width should be controlled at 10mm. Apply glue evenly at about 10mm from the double-sided adhesive tape. The double-sided adhesive tape and the structural adhesive are required to be adjacent to each other without sticking and contacting. The thickness of the glue is higher than that of the double-sided tape, and the width is about 10mm.

2. Basic leveling and pasting method

- 2.1 Please be sure to use cement board, block board, or wooden keel for base leveling.
- 2.2 Use a glue gun to apply glue. It is required that the base layer and the glue surface of the cement board be cleaned and apply special glue on the back of the decorative cement. The adhesive is recommended to use structural adhesive, tile glue, nail-free glue, etc.
- 2.3 Use small wooden squares and self-tapping screws or drywall nails to temporarily nail each board's four corners and the joints between the panels to prevent the panels from shifting or warping. After the glue is solidified, remove the small wooden squares.
- 2.4 Nail-free glue is a multi-functional building structure superglue with strong adhesion, which can bond the cement board to the back substrate. High strength, anti-stripping, impact resistance, simple construction process.

3. Keel leveling paste method

- 3.1 Use detergent to clean the keel's surface, remove the oil on the keel, and use the recommended primer for painting.
- 3.2 Use the corresponding cleaning agent to clean the area to be fixed on the back of the board and let it dry, then apply the complementary primer and wait for it to dry.
- 3.3 Apply the adhesive to the keel according to the installation instructions of the adhesive manufacturer.
- 3.4 Paste the double-sided tape on the keel.
- 3.5 After the cleaning agent and primer are thoroughly dried, remove the protective layer on the foam strip and start the installation of the panel.
- 3.6 Before the bonding is adequate, make slight adjustments, install the board in the specified position, and gently press the board to fix it.

Fixed Installation

1. Rivet fixing

Blind rivets are a type of rivets used for single-sided riveting. The color can be customized according to the color of the plate, and professional equipment is required for installation.

- 1.1 Paste foam strips on the keel and pre-drill holes on the board with a diameter of 11mm.
- 1.2 First, install the fixed point. Use the centering drill to drill a 4.9mm diameter hole on the keel and remove the residue simultaneously.
- 1.3 Fixing point installation: Put the rivet with a large hoop into the rivet gun, insert it into the fixing point, and fix it by pulling it.
- 1.4 After installing the fixed point, install the movable fact: use the centering drill bit to drill a 4.9mm diameter hole on the keel and remove the residue simultaneously.
- 1.5 Installation of the active point: Put the rivet with a small hoop into the rivet gun, insert it into the functional point, and fix it by pulling it.

2. Nail fixing

It can be directly fixed on the wall or skeleton using self-drilling screws, steel nails, and other auxiliary materials, and it can also be provided with grooves on the upper and lower sides of the board and installed with unique metal pendants.

Screws, Nails, Expansion Wire



COMPANY PROFILE

Company Profile



Founded in 2004, STARMAX is a company dedicated to the procurement of new architectural materials. Its service targets include designers, architects, construction companies, design companies and other professionals and institutions related to the architectural design industry.

Our products cover various new building materials such as pouring panels, wall panels, components, coatings, etc., with tens of thousands of styles, which can meet the needs of different projects. In order to better serve customers, STARMAX has established long-term cooperative relationships with the world's top suppliers of new building materials. We firmly believe that high-quality and innovative materials can bring more possibilities and creativity to the architectural design industry, and at the same time improve the quality and value of projects.

How We Help Designers

Sifting through endless options online, creating dozens of new accounts, digging through supplier information, running a business while keeping track of the full content of purchased materials...have you ever felt like, it's a hassle more than once?

Every stage of the interior design process will be easier and more efficient when you have an efficient purchasing assistant!

STARMAX is a company dedicated to the procurement of new building materials, serving professional designers.

With our 18 years of sourcing experience and strong supplier background, you can draw inspiration from our vast library of building materials to turn any idea into reality.

We have over 135,000 products from over 1,700 suppliers worldwide.

Get in touch with us, and you will get free building material samples, exclusive material guides, annual building material trend collections and detailed price lists provided by STARMAX. You can choose directly from our wide range of new material options, or provide your ideas and models to our business staff.

- No project style restrictions;
- No need to create an account;
- No extra charge;
- After the order is completed, the shipping fee will be refunded in full;
- Screen multiple suppliers for comparison;
- Help procurement cost control.

In addition, we can also help you obtain first-class FF&E, OS&E procurement solutions. We can provide you with any level of design assistance you may require. We will be an extension of your team, supporting you with budgeting, product consulting, value engineering and procurement.

Whether you are an architect looking for innovative materials, a designer needing a special order, or a supplier of new products for your company, STARMAX can help you find what you need.

Our Team



The STARMAX project team is composed of experienced industry elites, including procurement team, business team and construction new material professionals, who always focus on business and partners' commercial success. Through efficient communication, we understand customer needs, customize innovative, competitive and cost-effective procurement solutions for customers, and supervise production and logistics in a timely manner to ensure that orders are delivered on schedule and projects do not miss the best time.



Our Mission And Vision

STARMAX is committed to providing innovative, environmentally friendly and high-quality new building materials for the architectural design industry, creating more possibilities for customers and creating a better future for society.



*PRODUCT
STRUCTURE*

Product Supply Chain

After years of accumulation and hard work, STARMAX now has a large operation service team and rich experience, providing customers with a full range of integrated services from product development, production, OEM, procurement, agency, import, warehousing, logistics services to sales services .

Therefore, in addition to providing material procurement services, STARMAX also provides customers with one-stop services related to hotel business, including hotel renovation, hotel interior design, hotel product research and development, etc.

In the past 18 years, STARMAX has provided a complete set of renovation solutions for 1000+ hotel owners around the world, as well as related hotel products such as bedding, bathroom linen, tableware, furniture, and hotel personal product sets. Partners are located in more than 200 countries and regions around the world, including North America, Europe, Asia, Central America, the Middle East, Africa, etc.



Full-Line Supply Chain Of New Materials

Cement Series

- Cement Pouring Panel
- FRP Cement Pouring Panel
- Art Cement Pouring Panel
- Cement Decorated Slotted Panel
- Transparent Cement

Electroplated Tile Series

- Electroplated Marble
- Electroplated Ceramic Tiles
- Electroplated Mosaic

Mosaic Series

- Wood Mosaic
- Tile Mosaic
- Electroplated Mosaic
- Ultra Black Tiles

Paint Series

- Lime Paint
- Clay Paint
- Microcement Paint

Weaving Series

- Bamboo Weaving
- Rattan Weaving
- Pvc Weaving

Paper Series

- Dupont Paper
- Textured Paper

Creative Series

- Deep Mirror
- Star Ceiling Panel
- Immortal Moss

Panel Series

- Colorful Wooden Panel
- HPL Fireproof Panel
- Mirror Panel
- Gypsum Texture Panel
- PU Decorative Panel
- Foamed Ceramic Texture Panel
- Acrylic Panel
- Resin Glass
- Polyester Sound-Absorbing Panel
- Wood Silk Sound-Absorbing Panel

Metal Series

- Metal Panel
- Metal Ripple Panel
- Metal Mesh
- Aluminum Foam
- Metal Profiled Material

Art Brick

- 3D Cement Tiles
- Crystal Brick
- Hollow Crystal Brick
- Jade Glass

Wall Panel Series

- Mirror Wall Panel
- Metal Wall Panel
- Colorful Wall Panel
- Solid Wall Panel
- Hollow Wall Panel
- Microcement Wall Panel
- Wood-Plastic Grille

Soft Marble Series

- 3D Panel
- Project Panel
- Regenerated Marble
- Rammed Earth Panel

Component Series

- PU Component
- Foamed Ceramic Component

Marble Series

- Ultra-Thin Marble
- Volcanic Marble



STARMAX